

Space News Roundup

Vol. 24 No. 15

August 23, 1985

National Aeronautics and Space Administration



A 35mm camera mounted in a firebox on the Rotating Service Structure at Pad 39A at the Kennedy Space Center captured this view of the launch of *Challenger* during the 51-F ascent July 29. This

is the first time the photographic system has been able to capture all of the Shuttle stack in one frame during a launch.

NASA, SII agree to 'space park'

A small Houston-based company will construct and operate the first habitable commercial platform in space. NASA and Space Industries, Inc., (SII), announced Aug. 20 the signing of an agreement that will allow SII to deploy from the Space Shuttle its Industrial Space Facility (ISF), a privately-owned commercial platform.

Space Industries, Inc. has signed a separate agreement with NASA's Space Station office to provide for beneficial exchange of information during the definition and preliminary design phase of the Space Station. In addition, this agreement lays the groundwork for subsequent discussions and negotiations during the Space Station development period, now scheduled to begin in mid-1987.

SII is the first private company to sign an agreement with NASA's Space Station office to share information that could result in a commercial facility capable of compatible operations with the Space Station.

NASA Administrator James M. Beggs said, "We hope the ISF will be the first of many such platforms to be funded and built by private industry that will complement the permanently-manned Space Station and lead eventually to an industrial park in space."

The ISF will be modular in concept and will initially measure 35 feet by 14.5 feet. While it will not be permanently manned, it is designed to be habitable and will provide a "shirt sleeve" work environment for astronauts when docked with either the Space Shuttle or Space Station.

"NASA considers the ISF to be a complementary capability to the Space Station," said Philip E. Culbertson, Associate Administrator for NASA's Space Station office. "There are characteristics of the ISF and the Space Station that are similar. They both provide habitable work space, are Shuttle dependent, and essentially autonomous. For these reasons, there may be some aspects of the two programs that are of mutual interest and use to both NASA and SII."

Max Faget, President of Space Industries, Inc., said "The facility is scheduled to be deployed in 1989 and will respond to a variety of private research and manufacturing needs. Industry could take advantage of the unique gravity-free environment of space to conduct experiments that cannot be effectively duplicated here on Earth, particularly in the areas of pharmaceuticals and biological products, pure and exotic crystals, and new metals and alloys," he said.

SII considers the cost of building the ISF to be proprietary. Under this novel agreement, a unique provision stipulates that NASA be reimbursed for all costs incurred by the government associated with the deployment of the ISF when it becomes operational and is revenue generating. These costs include but are not limited to integration, launch on the Space Shuttle, optional services, and adjustments for inflation.

MOD Olympics event set for Sept. 7

Employees within the Mission Operations Directorate are invited to strap on sneakers, pack a picnic lunch and bring the family to the first annual MOD Olympics, to be held Sept. 7 at the Gilruth Recreation Center.

The friendly competition between MOD's six divisions will be a family event, with participation of spouses and children encouraged. All MOD

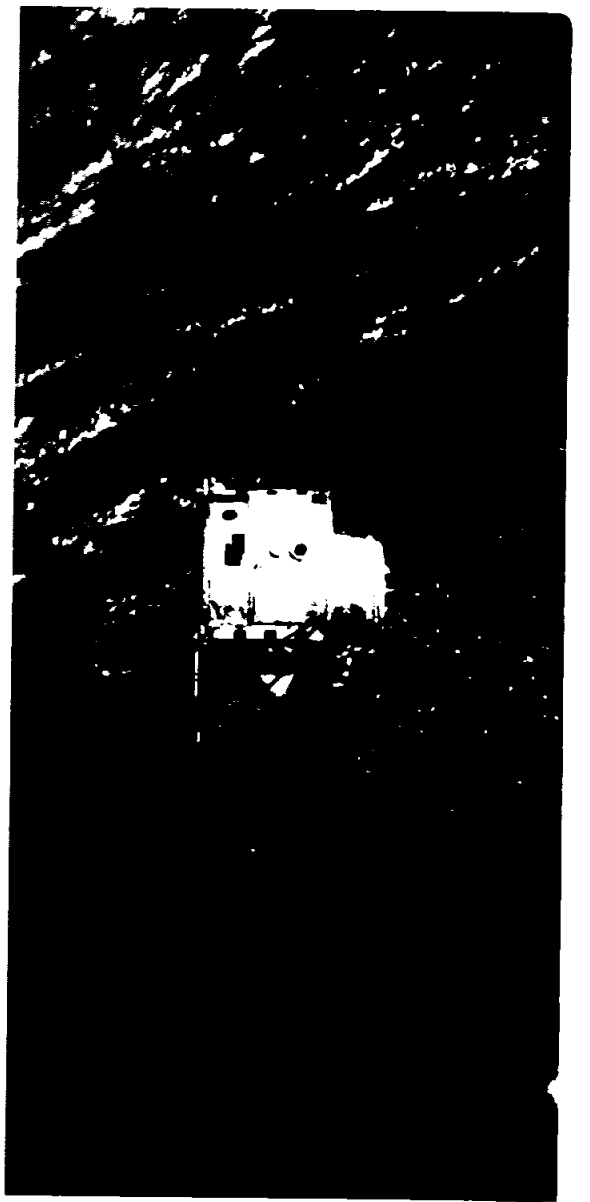
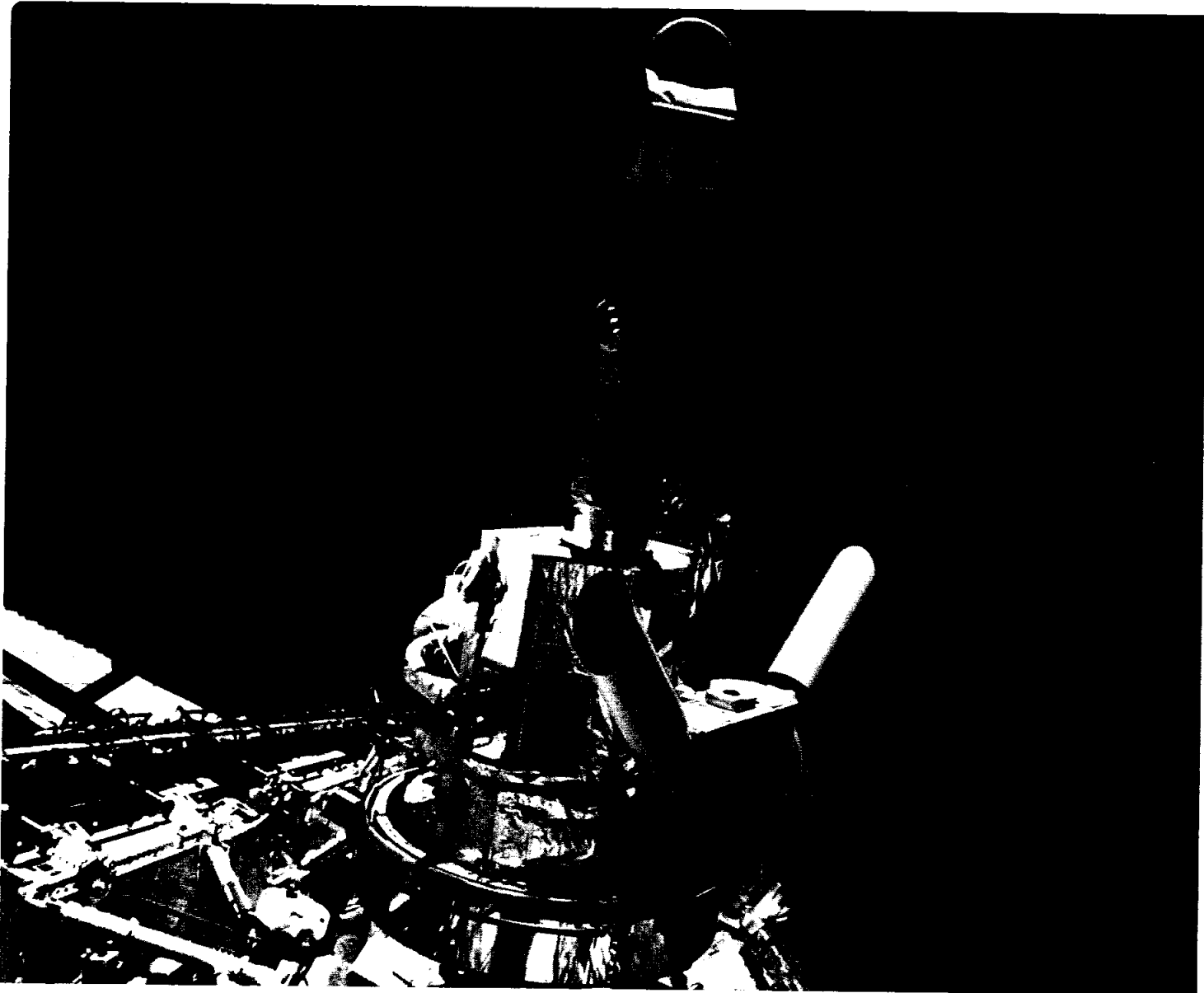
civil service, on- and off-site contractors and Air Force personnel are invited to attend.

In the course of participating in 16 events through the day, the six divisions will collect points as they compete with one another. Events will include baseball, basketball, tennis, an obstacle course, horse-shoes, an egg toss and other competition.

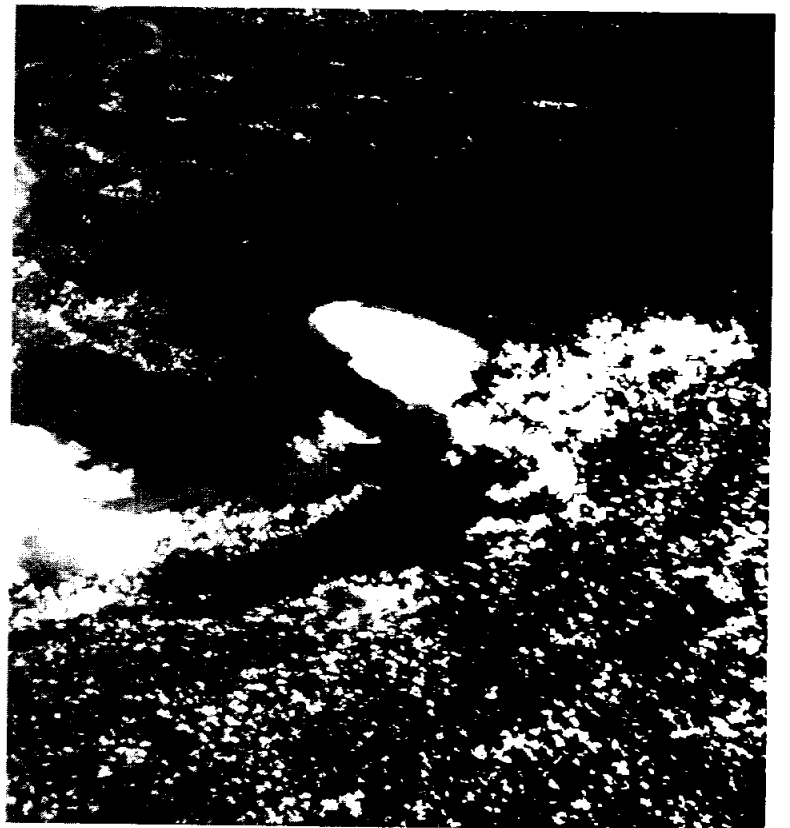
MOD will provide the beer, wine and soft drinks, as well as entertainment (a DJ will play music and KSRR-FM radio personality Moby will also be on hand). Employees are asked to bring their own picnic lunches or snacks.

Tickets are \$2 in advance and \$3 the day of the Olympics. Tickets are on sale now and are available

from the division representatives or from any secretary in MOD. Offsite contractors should contact the appropriate onsite division rep or secretary. The division representatives are: DA/Cecil Dorsey, x2923; DE/Tom Gibson, x5047; DF/Theresa Stevens, x3606; DG/Dennis Beckman, x3048; DH/Melisa Owens, X2688; and DM/Kent Joosten, x4367.



It was a mission where the Spacelab system went operational, where the Shuttle system met its greatest inflight challenge to date, and where the science return was described as overwhelming. One star of the mission was the Instrument Pointing System, above, shown here studying the sun and being evaluated for future operations. One of the program's trickiest flying tasks was carried out by Commander Gordon Fullerton and Pilot Roy Bridges during operations with the Plasma Diagnostic package, above. At left, Mission Specialist Karl Henize enjoys a view out an aft flight deck window. One of the sights the crew recorded was a towering cumulonimbus cloud over Texas City on a pass over Galveston Bay. Below left, Bridges reacts to another message from the ground, part of a teleprinter uplink total longer than several football fields. Below right, Lead Flight Director John Cox presents Booster Officer Jenny Howard and Flight Dynamics Officer Brian Perry, both of the Ascent/Entry team, with the 51-F plaque at the conclusion of the mission. The two were selected to hang the emblem for their performance during Challenger's abort to orbit during launch. The rotary dial turned to "ATO" in Challenger's cockpit is seen in the inset.



Space News Briefs

Second pad on line at Kourou

The European Space Agency has formally accepted and declared operational a second launch pad facility at the Ariane launch center at Kourou, French Guiana. The new launch complex, ELA-2, includes a launch preparation area and the launch pad, both linked by rail. The new facility allows two launch flows to be carried out in parallel and will enable a launch rate of ten per year. ELA-2 was designed to handle the Ariane 2 launcher, as well as the updated Ariane 3 and 4 configurations. It will become the main launch complex at Kourou and will first be used in December for the Ariane 3 launch of Brasilsat 2 and G-STAR 2.

Bulletin Board

Clinic to offer influenza vaccine

Again this year, the JSC Clinic will be giving influenza vaccine inoculations. Each year, flu outbreaks occur in the United States, varying in incidence and geographic distribution, but capable of causing periodic widespread outbreaks. As before, high risk individuals and those who provide essential services may wish to consider taking the vaccine. Those who do will be asked to sign an informed consent form. Adults will require one dose only. The vaccine will be given daily at the Clinic in Bldg. 8 from 10 a.m. to noon and from 2 to 4 p.m.

Air show set for Ellington

The Confederate Air Force will have an air show at Ellington Field Aug. 24 and 25. The gates will open at 9 a.m. to view the World War II airplanes and recreations of World War II battles. Also on tap will be aerobatic performances. Tickets are \$6 for adults, \$2 for children if purchased before Aug. 24. The prices will be \$1 higher if purchased at the gate. For more information, call Shirley Huss, x2457.

NARFE to meet

The NASA chapter of the National Association of Retired Federal Employees will hold a dinner meeting at 6 p.m. Sept. 3 at the Harris Co. Park Bldg. on NASA Road 1 on the banks of Clear Lake. All retirees and those planning retirement are invited to attend. For more information, call Dick Jacobs at 532-1075.

Stephens to discuss China trip

Robert Stephens, Technical Director at McDonnell Douglas Technical Services Co., will discuss his recent trip to China at the next monthly forum program sponsored by the Houston Section of the American Institute for Aeronautics and Astronautics. The AIAA forum will be held from 11:30 a.m. to 12:30 p.m. Sept. 12 at the new McDonnell Douglas tower on Space Center Blvd. The talk is free and open to the public. Escorts will be available at the front desk. For more information, call Garland Bauch, x5844, or Henry Schneider, 280-1500, x3083.

NCMS invites interested persons

The Houston Chapter of the National Classification Management Society (NCMS) invites interested persons in the security field to consider membership in the organization. The NCMS seeks to provide a forum in which issues associated with classified information can be discussed, and where people from different areas of the security community can meet. Training seminars are conducted at most meetings dealing with one or more of the security disciplines. Membership is open to people from government and industry. Those having past, present or future responsibility with government, industry or educational information security programs or a related field are invited to attend a meeting. The group meets the second Tuesday of each month. For more information, call Elaine Chapko, x4841, or Bill Dawson at 280-2331.

Gilruth Center News

Call x3594 for more information

Advanced word processing - To enroll in this course, you must know Wordstar. Training will cover Mailmerge. This 3-week course will begin Aug. 28 and run from 5:30 to 8:30 p.m. Cost is \$85 per person.

Word processing - Work with IBM, Apples, and other machines in this course, which will cover legal letters, resumes, and other documents, all using Wordstar. This 6-week course begins Oct. 21 and runs from 5:30 to 8:30 p.m. Cost is \$190 per person.

Home maintenance and repair - Learn residential carpentry, drywall and plaster patch, tilework, cabinet installation, plus all the odds and ends. Demonstrations, models and diagrams, notes and hard copy will provide general knowledge with opportunities to air individuals' specific housemending needs. Class begins on Wed., Sept. 4 for 6 weeks, meeting from 7 to 9 p.m. at a cost of \$40 per person.

Country western dance - This course begins Sept. 9 with two beginner classes offered. The first session runs from 7 to 8:45 p.m., while the second session meets from 8:45 to 10:15 p.m. This 6-week course is \$20 per couple. Limited enrollment exists. First come, first serve.

Lawn and garden care - Learn how to control insects, how to select plants, and how to maintain landscaping. Class meets on Wednesday nights for 4 weeks beginning on Sept. 4. Cost is \$10 per person.

Scuba lessons - NAUI certified - This basic scuba course begins Sept. 9 on Mondays from 6:30 to 9 p.m. and Wednesdays from 7 to 9:30 p.m. for a pool session in La Porte. Cost for this class will be \$45 per person. Additional charges will be made for pool and equipment rental. Enrollment is limited. First come, first serve basis for this 6-week course.

Beginning shorthand - The multi-purpose skill! In this course you will learn the basics for reading and writing Gregg Shorthand. You will work on speedbuilding. This valuable 6-week course begins Sept. 11 on Wednesday nights from 5:30 to 8 p.m. at a cost of \$85 per person.

Guitar - The beginning class is for people with no musical experience. It will focus on learning simple songs, chord strums and melodies. Beginners meet on Sept. 11 from 7 til 8 p.m. for 6 weeks, and the cost is \$25 per person.

Banjo - Learn how to play on a 5 string banjo. Class begins on Sept. 11 from 8 til 9 p.m. for 6 weeks, and the cost is \$25 per person.

Volleyball clinic - Come learn how to set, bump, and spike. The cost for this three day session will be \$10 per person. Dates and times are as follows: Friday, Sept. 6, from 6 to 9 p.m. Saturday, Sept. 7, from 9 a.m. to 6 p.m., and Sunday, Sept. 8, from 1 to 4 p.m. Deadline for registration is Aug. 30. For more information, call Helen Munk x3594.

Roundup Swap Shop

All Swap Shop ads must be submitted on a JSC Form 1452. The forms may be obtained from the Forms Office. Deadline for submitting ads is 5 p.m. the first Wednesday after the date of publication. Send ads to Roundup, AP3, or deliver them to the Newsroom, Bldg. 2 Annex, Room 147. No phone in ads will be taken.

Property & Rentals

Lease: Heritage Park 3-2-2, close to NASA, new section, \$525/mo. Also, land contract or lease option, Bayview brick 3-2-2, \$425/mo. Glenn, x6541 or 486-0462.

Rent: Galveston condo, Gulf front, 2-day to 1-month, low rates. Nussman, 488-7762.

Sale: El Cary 3-2-2, lg. brick patio, hi-eff. heat pump/gas furnace, 1,800 sq. ft., private park w/ ramp & pier on Clear Lake, \$79,900. R. Hoover, x3138 or 996-7716.

Rent/Option: Baybrook/Friendswood 3-2-1, fans, patio, central AC, fenced, \$475/mo. Also, rent/option on CLC 3-2-5-2, FPL, 2-story, gas grill, \$625/mo. 472-3244 or 326-4481.

Sale: Friendswood/Forest Bend 4-2-2, corner, formals, new cabinets & bookcases, new AC, mini-blinds, fans, no flood in '79, \$69,900, 16823 Hibiscus. Boatwright, x5244 or 482-0727.

Lease: Tranquility Lake 1 BR condo, security, W/D, microwave, ref./frzr., \$350/mo. Webster, x4776 or 554-6892.

Sale: '82 mobile home, 2-2, low down, assume \$385/mo. note. Darlene, x5881 or 534-6616.

Lease: Seabrook 4-2-2, 2,000 sq. ft., FPL, fans, cul-de-sac, fenced, near school & pool, \$500/mo. plus deposit. Sylvia, x4671 or 331-0733.

Sale: Piper's Meadow 3-2-2, brick, garden bath, country kitchen, deck, FPL, fenced, fans, energy eff. Jan, x5491 or 488-4410.

Lease: Univ. Green patio home, 2-2-2, split BR, FPL, microwave, close to pool, cathedral ceiling, \$650/mo. 488-0500 or 480-6516.

Sale: large waterfront lot, 105 ft. frontage, many trees, over 1/2 acre, near marina. Also a lake view lot. (409) 855-2063.

Sale: Nassau Bay 4-2-2, 2,200 sq. ft., roof, deck, 20' FPL, atrium, new carpet & paint, owner financing, \$114,900. Jerry, x3561.

Sale/lease: Friendswood 3-1.5-1, FPL, fenced, cathedral ceiling, near schools, assume 9.5% VA, \$14K equity, \$51K total, or \$450/mo. plus deposit. 482-7546.

Lease: Baywind II condo, large 1BR, FPL, W/D hookup, near NASA CLC gate, \$325/mo., 1 mo. free for 1 yr. lease. Mason, x5457 or 333-4144.

Sale: Heritage Park 4-2-2, 1,868 sq. ft., FPL, cathedral ceiling, fenced, almost new, \$66,500. L. Lee, 486-1261 or 996-0437.

Sale: League City 3-2-2, water access, many extras, quiet wooded area, \$50,000. 538-4214.

Sale: Pecan Forest 3-2-2, League City, FPL, fenced, energy eff., 212 Pecan Drive. 554-6200.

Lease: Sycamore Valley 3-2-2, FPL, formal dining, fence, large kitchen, new paint, \$550/mo. 482-6609.

Lease: Forest Bend, 2-1.5-2, 1,000 sq. ft., 2-story townhome, fans, W/D, ref./icemkr., fenced patio, util. room. Sandra, 280-2361 or 333-5426.

Sale: 100 acres, old house, tractor, equipment, fruit & nut trees, bass ponds. \$825/acre. 488-8105.

Lease: Egret Bay 1-1-2 condo, FPL, W/D, covered pking., patio view of water. Actkinson, x3781 or 482-7061.

Sale: Middlebrook 4-2-2A, contemp., open floor plan, fenced, FPL, well kept, \$88,900. Ron, x3821 or 488-7387.

Sale/lease: Baywind II townhome, 2-story, 3-2-5-2, FPL, all appliances, owner finance equity, assume 11.5%, \$600/mo. 532-1179.

Rent: Pebblebrook 2-1.5 condo, appliances, W/D, fans, FPL, 2 balconies, 10 min. to NASA, \$400/mo. Angie, x2055.

Lease: Egret Bay 2-2-2, fan, FPL, W/D, clean, \$400/mo. plus \$200 deposit & references. 486-8551.

Sale: 37.5 and 10 acre tracts, wooded, Burnet Co., \$2,000/acre and up. 1-915-388-3786.

Rent: Lakeside condo, The Landing, 2-1, 5 min. to JSC, furnished or unfurnished, ready Sept. 1, \$575/mo. incl. util. Carol, 486-0697 or 486-7565.

Rent: Garage apartment, kitchen/dining/living/BR/bath, fully furnished, off-street parking, on lake, pool, 3 mi. to JSC, \$300/mo. incl. util. 532-1643.

Sale: Heritage Park 3-2-2, FPL, fans, deck & spa, near school, pool & tennis, quiet, \$74,900. Call 996-9411.

Rent: Pasadena/South Houston 3-1.5-2 brick, central AC/heat, appliances, clean, excellent location, \$500/mo. 941-5908 or 941-1092.

Sale/lease: La Porte Bay Pointe townhouse, 2 BR, stove/ref., W/D hookup, covered patio, 2 car ports, quiet, \$450/mo. 488-4135.

Sale: Lakefront lot, Brazoria Co., access to fishing, swimming, tennis,

horse riding, 12% assumable. Don, 280-6307 or 554-6205.

Lease: University Green 3-2.5 townhouse, FPL, fans, appliances, covered patio, fenced yard, paid maint., 2-car garage w/opener, \$650/mo. 554-2065.

Lease: North Norhill 2-1-1, new carpet/paint, appliances, disposal, ready now, \$500/mo. plus deposit. Beverly, 333-5760.

Lease: Eldorado Way 1-1 condo, new paint, FPL, W/D, icemkr., fans, \$325/mo. Joyce, x2731 or 782-9386.

Sale/rent: 2-1-1 brick, den, walk-in pantry, remodeled kitchen & bath, appliances, fans, fenced, corner lot, good location, \$45,700 or \$375/mo. 941-5908.

Lease: Scarsdale 3-2-2, fans, mini-blinds, near school, well-kept, never flooded, \$500/mo. Call Mansell, x2426 or 481-1092.

Sale: Wildwood/Seabrook 4-2-2, assume \$87,000, excellent condition. Anne, x5066 or 474-7020.

Sale: Three properties in Durango, CO: 2-1.5 condo, appliances, near college, 1,050 sq. ft.; lg. 3 BR, 20 mi. from Purgatory skiing; lg. 82 x 110 lot, will neg. all or part. Call collect. (303) 259-1256.

Rent: Room in Heritage Park home, separate bath, share kitchen, ready now, \$250/mo. incl. util. Jack, x3089 or 280-1500.

Lease/sale: Forest Bend 4-2-2, FPL, game room w/ pool table, new hi-effic. AC, \$550/mo. Also, Bayview/Kemah brick 3-2-2, CC schools, new carpet, large lot, \$425/mo. Glenn, x6541 or 486-0462.

Sale: League City/Glen Cove 4-2-2A, fenced, new AC, new paint in & out, new roof, \$63,500. Doug, x3296.

Lease/sale: 2 or 3 BR custom townhouse, 2.5 bath, DW, refrig., disposal, microwave, W/D, FPL, fans, central AC, paid lawn care, spa. Mike, 280-4313 or 554-6378.

Lease: 1-1 condo, ground fl., FPL, fans, W/D, security system, furnished if you want, ready 9-1-85. 660-6296.

Sale: Lg. 2BR South Austin condo, off I-35, appliances, fans, private balcony, by owner, \$44,900. 482-7910.

Sale: Northeast Park '82 mobile home, 14' x 64', 2-1, W/D conn., gas heat, patio cover, 2.5 ton AC, assume \$216/mo. no down. 455-2146.

Sale: 3-1-1 in Gulfgate Mall area, near school/mall/Hobby, aluminum siding, 70' x 135' lot, \$35,000. 455-2146.

Rent: Galveston/Tiki Island, new 3 BR on canal, dock boat, fish, swim, etc. Weekend, weekly, monthly rates. 486-9335.

Lease: League City 3-2-1, the Landing, W/D, refrig., fenced, near pool, \$499/mo. Bob, 280-3494 or 554-2250.

Sale: Univ. Green patio home, 2-2-2, corner lot on greenbelt, FPL, wet bar, solar windows, Jenn-Air range, cath. ceiling, near tennis/pool, \$91,000. 480-7413.

Sale: Dickinson 2-1 mobile home, '83, 14' x 64', extras, efficient, adult section of park w/pool, \$750 and assume \$297/mo. Garner, x5827 or 534-3499.

Sale: Countryside North 3-2-5-2, two story, 205 Brookdale, \$55,850. Ted, x7484 or 552-7432.

Sale: 1977 Champion, 14' x 65', furnished, W/D, refrig./frzr., Bay City area, \$12,495. Doug, x3296.

Lease: Bayridge 3-2-2, brick, fenced, FPL, pets OK, references, \$575/mo. + dep. Carol, 332-3613 or 332-5445.

Sale: League City property, 1.25 acre commercial lot, fronts FM 518, city util., across from South Shore Harbour, has 3 BR house. Carol, 332-3613 or 332-5445.

Cars & Trucks

'81 Grand Prix LJ, landau top, one owner, \$5,400. Nussman, 488-7762.

'81 Ford F-150 4x4, 4 spd. w/OD, no rust, camper shell. Matt, x5231, 486-7260, or 280-9496.

'76 Firebird Esprit, auto, PS, PB, radials, AM, good mech., needs some body work, \$2,500 OBO. Rhonda, 482-5184.

'82 Datsun 280 ZX, T-tops, under 30K mi., excel. cond., \$11,000. 554-4133.

'68 Volvo 122S, good running car, \$350. Karen, x5514 or 280-0734.

'79 Chevy Monza hatchback, V6, AC, PC, 44K mi., \$1,550. Scott, x3095 or 486-1689.

'78 Monte Carlo, new AC & brakes, \$2,800. Ned, x6321 or 534-4117.

'71 Malibu, 2-dr., AC, power, 350-V8, \$2,200 OBO. Stegemoeller, x4551 or 532-3323.

'81 Plymouth K car, sedan, AC, 4-sp., good tires, \$3000 OBO. 485-1503.

'68 Pontiac GTO, 400/400 HP, 4BBL, 3 spd. Hurst, M21, 355 posi, good cond., \$4,500. Mike, 333-2335.

'78 Buick V-6 turbo spt/cpe., 80K mi., AM/FM, AC, cruise, \$2,300. Ed, 528-4882.

'77 Malibu Classic, good cond., 2 dr., no AC, AM/FM/CB, \$1,400. Betty, x2811.

'76 Dodge Monaco, 4-dr., V8, runs well, \$895. Rick, x5341 or 480-8223.

'70 VW Beetle, auto stick shift, 47K mi., new paint & windshield \$1295. Also, Ford van bench seats, \$120 ea. or \$200 for both. John, x5301 or 482-8457.

'77 T-Bird, loaded, pwr. windows/locks/trunk, leather, much more, \$1,845. Kurt, 480-3565.

'58 MGA, rebuilt motor & trans., new brakes/tires/battery, feul pump, needs paint job; also 1959 MGA parts car, \$3,500 for both. (409) 727-6360.

'77 T-Bird, loaded, runs well. Billie, 482-4365.

'84 Berlinetta, V8, loaded, tilt, cruise, T-tops, clean, low miles. 488-1326.

'77 Dodge Maxi-Van, PB, PS, AM/FM/CB, auto, clean, \$6,900. Bob, x3445 or 921-1715.

'84 Trans Am, 5-sp., 16K mi., warranty, excellent, \$9,950. Kent, x4208 or 484-2411.

'79 Rabbit hatchback, 4-dr., 4-sp., AC, AM/FM, good cond., \$1,680. Jim, 333-6942 or 337-7082.

'80 Grand Prix LJ, V6, PS, PB, AC, velour, runs great, some rust, \$5,000 OBO. Marty, x4857 or 486-7500.

'79 Ford Van Econoline 150, V6, PS, PB, AM/FM, AC, dual tanks, \$2,900 OBO. Valerie, (409) 935-1149.

'80 Buick Regal, PS, PB, AC, V6, AM/FM, very good, \$3,200. John, x4478 or 326-4494.

'77 Toyota Celica, damaged front end, easily restored, best over \$1,000. 326-4395.

'78 BMW 733i, PS, PB, AC, sunroof, leather, excel. cond. \$10,950. 326-4395.

'77 VW Scirocco, AC, recent valve job, new muffler/starter/battery, \$2,100 OBO. 471-3498.

'84 VW Vanagon, AC, AM/FM/cassette, excel. cond., \$9,800, 998-9145.

'81 Toyota Corolla Spt. Coupe, auto, AC, AM/FM, new tires/brakes/shocks, excel. cond., \$4,850. 343-0768.

'78 Porsche 924, auto, sunroof, 41K mi., AC, AM/FM/cassette, excel. cond. 482-7643.

'73 Pontiac Bonneville, \$650. 488-3288.

'78 Alfa Romeo Spyder, new top, sheepskins, good body, no rust, 48.5K mi., \$5,000. Farmer, x6101 or 532-3173.

'84 Ford Crown Victoria wagon, excel. cond., V8, loaded, low miles, warranty, mint, \$10,500. 476-0205.

'73 Buick Electra, loaded, 43K mi., \$1,200. Jerry, x4971 or 488-5553.

'83-10 Durango pickup; '82 Silverado Diesel pickup. 471-5964.

'77 Ford LTD II, PS, PB, AM/FM, \$1,200. Alcorta, x3594 or 471-4843.

'82 Cadillac Eldorado, 33K mi., loaded, leather, one owner, \$11,200. Bill, x3701.

'75 Pontiac Firebird, PS, PB, good AC, AM/FM/cassette, minor damage, runs well, \$1,000 OBO. Steve, 482-2527.

(Continued on page 4)

NASA
Lyndon B. Johnson Space Center
Space News Roundup

The **Roundup** is an official publication of the National Aeronautics and Space Administration, Lyndon B. Johnson Space Center, Houston, Texas, and is published every other Friday by the Public Affairs Office for all space center employees. **Roundup** deadline is the first Wednesday after publication.

Editor Brian Welch
Editorial Assistant Tina Griego

Roundup Swap Shop

All Swap Shop ads must be submitted on a JSC Form 1452. The forms may be obtained from the Forms Office. Deadline for submitting ads is 5 p.m. the first Wednesday after the date of publication. Send ads to Roundup, AP3, or deliver them to the Newsroom, Bldg. 2 Annex, Room 147. No phone in ads will be taken.

Cars & Trucks

(Continued from page 3)

- '79 Ford pickup, 3/4 ton, 400, lift kit, 44-in. Groundhawg tires, \$4,500. Kathleen, 332-5177.
- '76 F100 Truck, short bed, 302-V8, camper top, manual, AC, PS, AM/FM/cassette, new short block, \$1,500. Johnny, x4331 or 470-1746.
- '67 Ford Mustang, 3-spd., AM/FM, new tires, good cond., \$2,900. 538-4327.
- '75 Ford Pinto, 4-spd., new tires/battery, 70K mi., runs well, \$600. 538-4327.
- '84 Subaru GL Wagon, like new, 4-dr., 5-spd., tilt, AC, AM/FM, 13K mi., \$6277. Pavelka, 482-7461.
- '80 Corvette, L-82, glass T-tops, loaded, \$10,000. Earl, x2848 or 326-2294.
- '83 GMC High Sierra short bed, 27K mi., cruise, AM/FM, pwr. windows, \$7500. Linda, x4921 or 326-2294.
- '72 Chevy Caprice, 4-dr., AC, PS, FM, good transport, one owner, \$795. Earl, x2901 or 326-3396.
- '77 Datsun B210, runs well but needs body work & paint, \$700 OBO. Mike, x6241 or 280-9021.
- '76 Cadillac Sedan de Ville, parts, excellent interior, \$200. Russ, 485-6919 or Keith, x5202.
- '76 Fiat X1/9, 4 spd., AM/FM/cassette, mags, good condition, blue, \$2,500. Ken, x4778 or 534-2634.
- '72 Porsche 914, 71K mi., orig. paint, alum. wheels, AM/FM/cassette, excel. cond. Wyatt, x3601 or 488-2631.
- '79 Mustang, 4 cyl., auto, PS, PB, AC, AM/FM/cassette, new carpet, excel. cond., 69K mi., \$2,500. 488-5881.
- '79 Chevy Beauville van, V8, PS, PB, AM/FM, 12-passenger, cruise, auto, \$4,200. Edmiston, x6316 or 991-0729.
- '74 AMC Hornet, 350 engine, lots of new parts, \$250. Bev, x4950 or (409) 935-9185.
- '81 Chevy Citation, V6, 4 spd., AC, AM/FM, excel. cond., \$2,000. Ling Chang, x4950 or 332-4600.
- '71 Datsun 240Z, classic, redone top to bottom, original signal seek radio, one of few in area. Tom P., x2796 or 554-4038.
- '77 Camaro, black, new tires, AM/FM, Jensen speakers, cruise, runs well, \$1,000. Kay, x4036.
- '71 Honda CB450, 2,400 mi., Wixom fairing, crash bars, carrier, mint, \$1,100. 486-9335.
- '75 Honda 750F supersport, MC, low miles, ex. cond. Bullock, 326-4949.
- '75 Kawasaki KZ650, 4 cyl., new batt., tuned, 15K mi., ex. cond., \$950. Randy, x5998 or 482-4083.
- '84 Yamaha XT-250, street legal dirt bike, less than 4K mi., \$1,750. Patti, x3796 or 538-4638.
- '75 Harley Superblade, mag wheels, ex. cond., \$2,800; '80 custom Superblade, ex. cond., \$3,000. 488-3265.
- '85 Honda ATC 200X 3-wheeler, low hours, \$1,600. 479-1242.
- Ladies 3-spd. 26" bike, \$35. Elizabeth, 333-3256.
- AMF Ladies 5-spd. 26-in. bike, like new, used very little, \$40. 485-1503.
- '83 XL100, excel. cond., never raced, low miles, \$600. Bob McDonald, 482-2472.
- '83 Honda XL600, runs and looks excellent, \$1,200. 335-1262.
- '84 Honda CR250, dirt bike, looks and runs great, \$1,000. 335-1262.

Boats & Planes

- '53 D-35 Bonanza, E225-8, Hyd prop., 950 SMOH, 50 STOH, IFR equipped, C/D brakes, 3rd window, aux. gas, etc. \$17,000. 488-3265.
- Want aluminum jon boat, 12 or 14 ft., with or without outboard. A.F. Smith, x4061.
- Small 2 person sailboat and trailer, \$420. McGee, 488-3720 or 334-4361.
- 15' Lamar fishing/ski boat, 50 HP Evinrude, electric shift, trailer, \$1,850. 488-4463.
- 18' Catamaran AMF Trac sailboat, trailer & extras, like new, \$4,750. 333-3056.
- '83 Lowling boat, 16', 6' beam, 35 HP Evinrude, stainless prop, galv. trailer, four 500 watt lights, much more, \$2,800. Kevin, x2016 or 554-2790.
- Falcon Bowrider, 18', 135 HP Johnson, pwr. tilt/trim, trailer, ex. cond., \$4,000. Bob Langley, 331-4155.
- '68 Thunderhawk, 14', 65 HP Merc., recent overhaul, newly rewired trailer, much more, \$1,700. 486-7674.
- Sea King 14' bass boat, 35 HP, elec. start, trailer, depth finder, troll mtr., 2 gas tanks, spare tire, etc., \$1,895. 649-7891.
- Dolphin Senior sailboat, all accessories including trailer, \$625. 488-3288.

LIDO-14 sailboat, sails, trailer, excellent recreation and competitive boat, \$2,595 OBO. R. Hoover, x3138 or 996-7716.

'81 Tidecraft bass boat, 80 HP Merc., pwr. tilt & trim, aerated live wells, depth finders, trolling mtr., \$4,650. Don, 280-6307 or 554-6205.

'26' Heavenly Twins catamaran, roomy, 5 sails, dinghy, solar cells, 9.9 outbd., crossed Atlantic, cruised Caribbean, \$19,500. 482-7910.

Household

Ancient Hoover upright vacuum, runs great, \$15. Bob Allgeier, x6486.

Sleeper sofa, deep blue/rust, used once, \$275; gray/cranberry wing back chair, \$50; wall accessories, \$15-25. Nancy, x4381.

Couch, 7-ft. champagne, like new, \$250; 5-in. AC/DC B&W TV, \$59.50; hand-built sailing vessel on stand, \$25. 488-5564.

Sears gas dryer, \$20. Julie, 337-1160.

China cabinet, maple veneer/glass, brass handles, interior light, exc. cond., \$95. Sue, 486-8016.

Bedroom suite, 2 pc., queen size bed, triple dresser w/mirror, \$250; 4 pc. bedroom suite, full bed, 2 dressers, mirrors, bedside table, \$350. Herm, 482-7669.

30 gal. aquarium, contemp. design, wooden stand, accessories, \$150. 480-9357.

Antique Victorian bedroom suite, 7 ft. tall bed & dresser, 2 marble table tops, library table, \$3,200; antique dining room suite, 10 pcs., inlay on all, early French, \$4,500. 488-5564.

Antique trestle table, 2 pull out leaves, 36" x 62", \$200. David, 333-0813 or 996-9715.

17 cu. ft. Penny's refrigerator, 4 yrs. old, avacado, icemaker ready, \$300. Stanley, 4326 or 482-2543.

Gas range, 36" Caloric, removable griddle over 5th burner, continuous clean, 8 mo. old, \$450; Kitchen Aide energy saver dishwasher, good shape, \$200. 482-4628.

Stratolounger, brown & beige, comfortable, good condition, \$50. Mike, 333-2335.

4' x 8' braided rug, new, brown colors, \$40. 482-4365.

Queen size box springs, excellent condition, \$45. 471-3498.

Queen size sleeper sofa, inner spring mattress, Earth tones, good shape but faded, \$175; end tables, \$25. 538-4327.

Roll away bed, 48", excellent condition, \$39. 482-9063.

Early American queen size sofa bed, rocking chair, sturdy but need a little repair, \$125. 334-4894.

Sofa and loveseat, navy blue, like new, \$475; 50" x 60" sailboat print, \$75; full bed, \$75; 4 aluminum Corvette rims, \$75. 538-4077.

5-piece dinette, \$80; brass queen size headboard, \$25. Sashi, x3929 or 482-9476.

Small refrigerator for dorm room, \$50. Jim Mistrot, x6353 or 488-7360.

Rattan sofa, chair, 2 glass top end tables, 1 coffee table, 2 lamps, \$950 for the set. Diane, (409) 935-5340.

King-size motionless waterbed, \$217. Steve, 480-7413.

Couch and chair, wood, perfect for college, \$100. Beth, x4451 or 996-9247.

Dinette, 2 leaves, 8 chairs, excellent condition, \$125. Jim Mistrot, x6353 or 488-7360.

Full size Sears-O-Pedic mattress, headboard & frame, \$50. Ed, x5489 or 480-0273.

Pool table, 4' x 8', slate bed, new felt, remodeled, \$350 you move, \$550 move. Tom, x4576 or 474-3100.

Foam backed draperies, 72" x 61", burnt orange, like new, \$10. Ed, x5489 or 480-0273.

Maple dresser, oversize mirror, six drawer, \$75; maple 4 drawer chest, \$50. Tom P., x2796 or 554-4038.

Antique iron bed, \$75; antique roll top secretary, \$600; canopy bed, \$75; bedroom furniture, \$150. 486-1089.

Audiovisual & Computers

Commodore 64, 1541 diskdrive, 1526 printer, Vic-modem, lots of software, 326-1540.

CB radio, Cobra 25GTL, 40-channel, antennas, \$75. Ed, x5489 or 480-0273.

Sears 15" color portable TV, good picture, \$120; Toro power mower, self propelled, grass catcher, \$100. 488-5564.

HP41 series module, home utilities, new, \$16. Joe, x4905.

Commodore 64, 1541 diskdrive, 1702 color monitor, letter qual. printer, spreadsheet software, more. Gail, 486-5454.

Bass 15" Sears amplifier, volume, treble and bass controls. 554-7727.

Magnavox stereo system, dual 15 watt spkrs., turntable, 8-trk., AM/FM, \$125. Joe, 280-4237 or Linda, x4432.

AST 6 pack plus, clock calendar, RS 232 serial port, parallel printer port, RAM drive, new never used, \$225. Glenn, 488-6307 or 280-8727.

RCA 19" color TV, table model, 2 mos. old, wireless remote, \$300. 488-5967 after 5 p.m.

Akai GX 230D reel-to-reel, auto reverse, 7 in. reels, 9 tapes, \$350. Marston, x4647 or 488-6581.

Kenwood amp and receiver w/speakers, \$300. Mary Rose, x6141 or 486-9361.

Custom hand crafted teak component stereo and matching spkrs., Pioneer 50 watt receiver, 2 Akai 7" reel-to-reels, 1019 Dual turntable, 4 drawers, all custom fitted. Alison, x5827 or 488-3382.

Dot matrix printer w/ Apple serial interface card, \$75. 554-7706.

Sylvania 25-in. color TV, console, beautiful, \$398. Earl, x3958 or 326-3396.

Two black and white portable TV's, good working condition, \$20 ea. Ed, x5489 or 480-0273.

Pets

Will swap poodle sitting time for vacations, trips, etc., our home (Nassau Bay area), fenced, screened patio, no children, have 10 lb. male poodle. 333-2395.

Pit Bulls — ADBA, UKC, PR bred, whelped 7/18, 4 males, 4 females, 6 brindles, shots started, wormed, \$100-200. David, 333-0813 or 996-9715.

Free kittens, Julie, 337-1160.

Australian shepherd puppies, 7 wks., blues & blacks, with papers. Stacey, (409) 856-7408.

Musical Instruments

Ludwig drum set, 5 drums, 2 cymbals, hi hat, chair & sticks. Gil, x3591.

Antique Aeolian player piano, small upright, full working order, bench, many rolls, \$1,950. 481-2733.

Yamaha trombone, o.k. but needs minor part, good for new band student. \$75. 482-4260.

Bass guitar, headless, Lotus make, Steinberger tuner, w/case, \$200. Kit, 474-3100.

Gulbransen upright piano, great condition, tunable, \$400 you move. Brenda or Ron, x5231 or 482-8740.

Cleveland King trombone, \$175. Ronny Moore, x6455 or 486-0943.

Wanted

Want roommate for large 2-2.5 Baywind II townhouse, near NASA, cable TV, W/D, private bath, \$240/mo. plus 1/2 util. Kari, x5111 or 488-8919.

Want to fill outfield vacancy, need above avge. female for slowpitch mixed "A" League. Barbara, x6308, or Jim, 337-2107.

Want roommate to share lg. house, League City, W/D, garage, \$200/mo. plus 1/2 bills. Galen, x3576 or 332-8837.

Want ride from Alvin to Bldg. 1, 8 a.m. to 4:30 p.m. Sylvia Aragon, x4017.

Want roommates, League City house, \$210/mo., bills paid, furnished rm. w/cable TV, fan, etc., full privileges. No smoking, pets, or children. 486-5072.

Want 4-post '80 aluminum wheels, 1 set of post '81 factory stainless exhaust manifolds, all for '79 Vette. Bee Jay, x5451 or 486-8156.

Want 3-spd. bike and Kodak carousel slide projector. Bob Allgeier, x6486.

Want riders for carpool, Fairmount Pkwy. to Beltway 8 to JSC, 8 a.m. to 4:30 p.m. Carolyn, x5996.

Want child's table and chairs and Fisher Price record player. Dorothy, x2501.

Want used set of left hand golf clubs. Marianne, x4247 or 487-1535.

Want Dremel moto-tool and accessories, model 3801. Dave Dunn, x4326 or 486-0808.

Want to buy VHS recorder and 2.5 cu. ft. refrigerator. Bonnie, 333-6387.

Want scuba divers for spring Fla. Gulf dive trip, or Thanksgiving weekend at Crystal River. Pat Wilson, x4474 or 477-8585.

Want '80 or newer motorcycle, 750cc or bigger, in good condition. Marty, x4857 or 486-7500.

Want to share ride from Northshore or Channelview area to JSC, 7 a.m. to 3:45 p.m., hours flexible. Diane Le, x4612.

Want female to share 3-2-2 house in Heritage Park. Cindy, 280-6598 or 338-2302.

Want to buy Casio MT310 keyboard, working or not, others considered. Alison, x5827.

Want roommate to share 3-2-2 house in League City, brick, \$200/mo. plus util. 554-7706.

Want to buy pre-1964 coins, 25 ct., 50 ct. and \$1, also some later 40% silver Eisenhower dollars, will pay cash. 488-4859.

Want to buy electric trains. Don, x2449.

Miscellaneous

McKinley dollhouse, assembled, \$60; several doll kits, \$30-50. Nancy, x4381 or 488-1256.

1978 19" motor home, no generator, 36K miles, \$7,990. John, x5301 or 482-8457.

Air conditioners, two window units, good condition, \$75 ea. or \$130 for both. Wesley, x2719.

Windsurfer, HIFLI, demo model, cartop carrier, \$425. 488-1987.

Prince graphite tennis racket, like new, \$150. 488-9005, x268, or 486-7674.

Rent my motor home by day or week, self-contained, generator, roof air, comforts of home. Dave, x5111 or 480-0202.

Samsonite Silhouette II Ladie's makeup case w/key, turquoise, \$40. Suzette, x5018.

Empty 50# freon tanks, \$3 ea. Jim McBride, x6226 or 337-4643.

Four 14" x 7" basket wheels, excellent condition, \$80. 480-4688.

Window AC, 115 V, 8300 BTU, Montgomery Ward, needs some work, \$25. T. Smith, x2191.

Exercise system, bench, arm pulleys, leg curls, \$40. Tom Moore, x4405 or 488-4089.

Spaceland Toastmasters meet each first and third Wednesday at 11:30 a.m., Bldg. 3 Cafeteria. Joe DeKunder, 333-2191 for details.

For rent: Starcraft pop-up camper, AC, sleeps 6, \$180/wk. or \$28/day. Glen, x5629 or 480-3015.

Pflueger trolling motor, 24 lb. thrust, rear mount, 3 spd., reverse, mint, \$55. 334-7659.

Two G60 x 15 tires, excellent tread, \$15 ea.; three 14-in. Dodge 400 wheel covers, \$10 ea. 921-1715.

22" self-propelled lawn mower, 3.5 HP, like new, \$179. Earl, x3958 or 326-3396.

Maple bed, \$45; metal detector, \$165; Scout back pack w/frame, \$21. 482-8827.

Beseler 23CII enlarger, Dichro color-head, analyzer, lenses, motor base, tanks, much more, \$900. 326-1775, 6-9 p.m.

Limited edition prints by Charles France, Bev Dolittle, G. Harvey & Donald Vann, 486-1628.

Free heavy steel gym set, double swing, you dig it up; used formica drainboard, \$5. Joan, x2858 or 941-5908.

Save money, join West Loop Park and Ride van pool to NASA, Richard Heeter, x4561.

Brother sewing machine, carrying case, \$50; Hagstrum electric guitar, \$75. 480-8021.

Large canvas tent, w/floor, 15' x 9', 7' high, sides 4'. 471-0262.

Wood desk, \$25; BBQ grill, \$25; carpet, \$25; couch, \$25; queen size bed, \$25. 482-6609.

Three 185 R-13 tires, good tread, steel belts, \$20 ea. or 3 for \$50. 488-8105.

Firescreen, glass door, brass, like new. 488-2822.

Two airline tickets to San Francisco, \$138 roundtrip, departs Sept. 7, returns Sept. 15. Glenn, 488-6307 or 280-8727.

Starcraft camping trailer, sleeps 8, 3 burner stove, icebox, \$2,195. Stevenson, x6424 or 480-5681.

Electric portable typewriter, all works but tab, \$50; bumper pool table, heavy slate type, \$450. 482-4260.

Dogtown skateboard, independent trucks and kryptonite wheels, \$10; crab trap, wire meshed cage, \$5. Wade, 521-0041 or Jackie, 333-3183.

1890's steamer trunk, Lord & Taylor, \$100 or trade. 280-0454.

Carburetor kit, new but never used, gaskets, 0 rings, accelerator pump, fits Mazda 27-74, 1586 cc. \$10. Joe, x4905.

American chrome 5 spoke mags, Trans Am or Camaro lug pattern, 15" diameter, 2 10" rims, 2 8" rims, \$150. Mary Rose, x6141 or 486-9361.

Cookin' in the Cafeteria

Week of August 26 — 30, 1985

Monday — Chicken Noodle Soup; Wieners & Beans, Round Steak w/Hash Browns, Meatballs & Spaghetti (Special); Okra & Tomatoes, Carrots, Whipped Potatoes. Standard Daily Items: Roast Beef, Baked Ham, Fried Chicken, Fried Fish, Chopped Sirloin. Selection of Salads, Sandwiches and Pies.

Tuesday — Beef and Barley Soup; Beef Stew, Shrimp Creole, Fried Chicken (Special); Stewed Tomatoes, Mixed Vegetables, Broccoli.

Wednesday — Seafood Gumbo; Fried Perch, New England Dinner, Swiss Steak (Special); Italian Green Beans, Cabbage, Carrots.

Thursday — Cream of Chicken Soup; Turkey & Dressing, Enchiladas w/Chili, Wieners & Macaroni, Stuffed Bell Pepper (Special); Zucchini Squash, English Peas, Rice.

Friday — Seafood Gumbo; Baked Flounder, 1/4 Broiled Chicken w/Peach Half, Salisbury Steak (Special); Cauliflower au Gratin, Mixed Vegetables, Buttered Cabbage, Whipped Potatoes.

Week of September 2 — 6, 1985

Monday — Labor Day Holiday.

Tuesday — Tomato Soup; Potato Baked Chicken, BBQ Spare Ribs, Mexican Dinner (Special); Squash, Broccoli, Ranch Beans, Spanish Rice.

Wednesday — Seafood Gumbo; Liver & Onions, Baked Turbot, BBQ Ham Steak, Baked Meatloaf w/Creole Sauce (Special); Beets, Brussels Sprouts, Green Beans, Whipped Potatoes.

Thursday — Beef & Barley Soup; Chicken & Dumplings, Corned Beef w/Cabbage, Smothered Steak w/Cornbread Dressing (Special); Spinach, Cabbage, Cauliflower au Gratin, Parsley Potatoes.

Friday — Seafood Gumbo; Pork Chop w/Yam Rosette, Creole Baked Cod, Tuna & Salmon Croquette (Special); Brussels Sprouts, Green Beans, Buttered Corn, Whipped Potatoes.

Week of September 9 — 13, 1985

Monday — Cream of Celery Soup; Braised Beef Ribs, Chicken a la King, Enchiladas w/Chili, Italian Cutlet (Special); Navy Beans, Brussels Sprouts, Whipped Potatoes. Standard Daily Items: Roast Beef, Baked Ham, Fried Chicken, Fried Fish, Chopped Sirloin. Selection of Salads, Sandwiches and Pies.

Tuesday — Beef & Barley Soup; Turkey & Dressing, Country Style Steak, Stuffed Cabbage (Special); Corn Cobbette, Okra & Tomatoes, French Beans.

Wednesday — Seafood Gumbo; Catfish w/Hush Puppies, Roast Pork w/Dressing, Pepper Steak (Special); Broccoli, Macaroni & Cheese, Stewed Tomatoes.

Thursday — Cream of Tomato Soup; Beef Tacos, BBQ Ham Slice, Hungarian Goulash, Chicken Fried Steak (Special); Spinach, Pinto Beans, Beets.

Friday — Seafood Gumbo; Liver & Onions, Deviled Crabs, Roast Beef w/Dressing, Tuna & Noodle Casserole (Special); Whipped Potatoes, Peas, Cauliflower.

AT BUILDING #3

On Wednesday we feature The Reuben: Corned Brisket, Swiss Cheese on a bed of Sauerkraut, Poupon Mustard on Rye and 1/4 Pickle. Delicious! Monday and Thursday check out our French Dip Sandwich.