

Hodge Named to Head Future Missions Office

MSC Director Robert R. Gilruth last week announced the establishment of an Advanced Missions Program Office and reorganization of the Engineering and Development Directorate and of the Science and Applications Directorate.

John D. Hodge, currently director of the Lunar Exploration Working Group at MSC will head the newly-formed Advanced Missions Program Office, with responsibility for planning, coordinating, and directing all aspects of the Lunar Exploration Program and other advanced programs involving MSC.

The new program office will also represent MSC with the Apollo Lunar Exploration Office and other groups at NASA Headquarters responsible for advanced planning.

Three new positions have been created within the Engineering and Development Directorate to assist Maxime A. Faget in the management of spacecraft design, development and testing.

Aleck Bond, presently manager of Systems Tests and Evaluation will become assistant director for Chemical and Mechanical Systems and will supervise the Propulsion and Power Division, the Crew Systems Division, the Structures and Mechanics Division and a newly-formed Space Environment Test Division.

Robert A. Gardiner, currently chief of the Guidance and Control Division has been named assistant director for Electronic Systems with responsibility for the Information Systems Division, the Guidance and Control Division, the Computation and Analysis Division and the

Information and Electronic Systems Division, which has been renamed the Space Electronic Systems Division.

A new position of assistant director for Spacecraft Integration has not yet been filled. This organization will be responsible for performing spacecraft integration and systems analysis for the Apollo Spacecraft Program Office. It will also support the Apollo Applications Program Office and all other advanced missions by performing advanced spacecraft design, spacecraft integration, systems analysis, and systems engineering.

The Advanced Spacecraft Technology Division has been abolished and its personnel will be reassigned to the new organization for Spacecraft Integration and to the Structures and Mechanics Division.

The new Space Environment Test Division will be created from the Structures and Mechanics Division and will include the space environment testing and analysis functions conducted in the Space Environment Simulation Laboratory.

James C. McLane, currently assistant chief, Structures and Mechanics Division, has been named chief of the Space Environment Test Division.

In announcing the reorganization of the Engineering and Development Directorate, Gilruth noted that all the Center's capability in spacecraft design and development and systems tests

(Continued on page 2)

ROUNDUP

NASA MANNED SPACECRAFT CENTER

HOUSTON, TEXAS



VOL. 7, NO. 26

OCTOBER 11, 1968



HAPPY TRIO— Things must have been going well in the mid-September Apollo VII countdown demonstration test when the photographer caught this trio in the Launch Complex 34 blockhouse. Left to right are Kennedy Space Center Director Dr. Kurt H. Debus, Apollo Spacecraft Program Office manager George M. Low and KSC Director of Launch Operations Rocco Petrone.

Apollo VII Count Looks Good For Today's Planned Launch

The precount for the Apollo VII mission at *Roundup* presstime was clicking along smoothly toward a launch at 10 am CDT today. Mechanical buildup of the Apollo VII spacecraft Wednesday was completed as pyrotechnic devices and other ordnance were installed.

Weather forecast for this morning in the Cape Kennedy area predicted partly cloudy

skies, 10 mph winds and wave heights of less than three feet.

Apollo VII crewmen Walter M. Schirra, Jr., Donn F. Eisele and Walter Cunningham this week have been rehearsing various portions of the mission in the KSC Command Module Simulator. The crew Monday underwent a thorough physical examination to gather baseline data for comparison with post-flight measurements on the crew's physical condition. The final physical exam was scheduled for this morning at T-minus four hours.

The Apollo VII precount began Sunday afternoon, and checks were run of the environmental control system, guidance and navigation system and the stabilization control system. The spacecraft was powered up and serviced with water.

Hypergolic propellants last week were loaded aboard the spacecraft and RP-1 fuel was loaded on the Saturn IB first stage.

Apollo VII is an earth-orbital mission of up to 11 days duration, but most of the major mission objectives are expected to be met early in the flight. The mission is the first of several manned flights aimed at qualifying the spacecraft for the half-million-mile round trip to the Moon. Earlier unmanned flights have yielded all the spacecraft information possible without a crew aboard.

Apollo VII will be inserted into a 123 by 153 nm orbit. Spacecraft systems checkout will be the principal activity in the first two revolutions.

Near the end of the second revolution, the crew will separate the spacecraft from the S-IVB second stage and perform a simulated transposition and docking maneuver, using the spacecraft/lunar module adapter attached to the second stage as a target.

Extensive operational checkouts of the environmental control, guidance and navigation, and service propulsion systems

will occupy the crew for the next several revolutions. Included will be one of the mission's secondary objectives — rendezvous with the S-IVB approximately 30 hours after liftoff.

At 10 days 21 hours after liftoff, a service propulsion system retrograde burn will deorbit the spacecraft. Landing is planned in the West Atlantic about 200 nm south-southwest of Bermuda at the end of the 164th revolution. The aircraft carrier USS *Essex* will be the prime recovery vessel. The *Essex* sailed Tuesday from Quonset Point, Rhode Island.

Blood Bank Sets Collection Days

Blood collections for the MSC Blood Bank will be taken during nine bloodmobile visits to MSC and aerospace contractor sites during October and November. Operating hours will be from 9 am to 3 pm, with bloodmobile attendants taking a lunch break from noon to 1 pm.

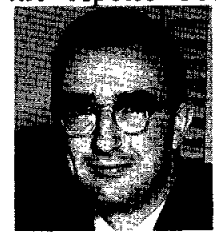
Dates and locations of bloodmobile stops are as follows: October 21—MSC Bldg 8; October 22 and 23—Lockheed Beta Bldg; October 24—MSC Bldg 8; October 28—STC Bldg VI; October 29 and 30—GE Bldg I; October 31—EAFB Bldg 276; November 4—Boeing.

MSC and onsite contractor employees should call Ed Stelly at 3378 for appointments for Bldg 8 bloodmobile stops. Aerospace firms whose employees are taking part in the MSC Blood Deposit Program are Brown & Root-Northrop, North American Rockwell, General Electric, Bell Aerosystems, Lockheed, Dynallectron, Boeing, American Telephone & Telegraph and Service Technology Corporation.

The MSC Blood Deposit Program committee in its September meeting voted to donate 100 pints of blood to Ben Taub Hospital in Houston for use in indigent cases.

Stoney Shifted To Phillips Staff

Advanced Spacecraft Technology Division chief William E. Stoney, Jr. has been named Deputy Director-Engineering of the Apollo Program in the



NASA Headquarters office of Manned Space Flight.

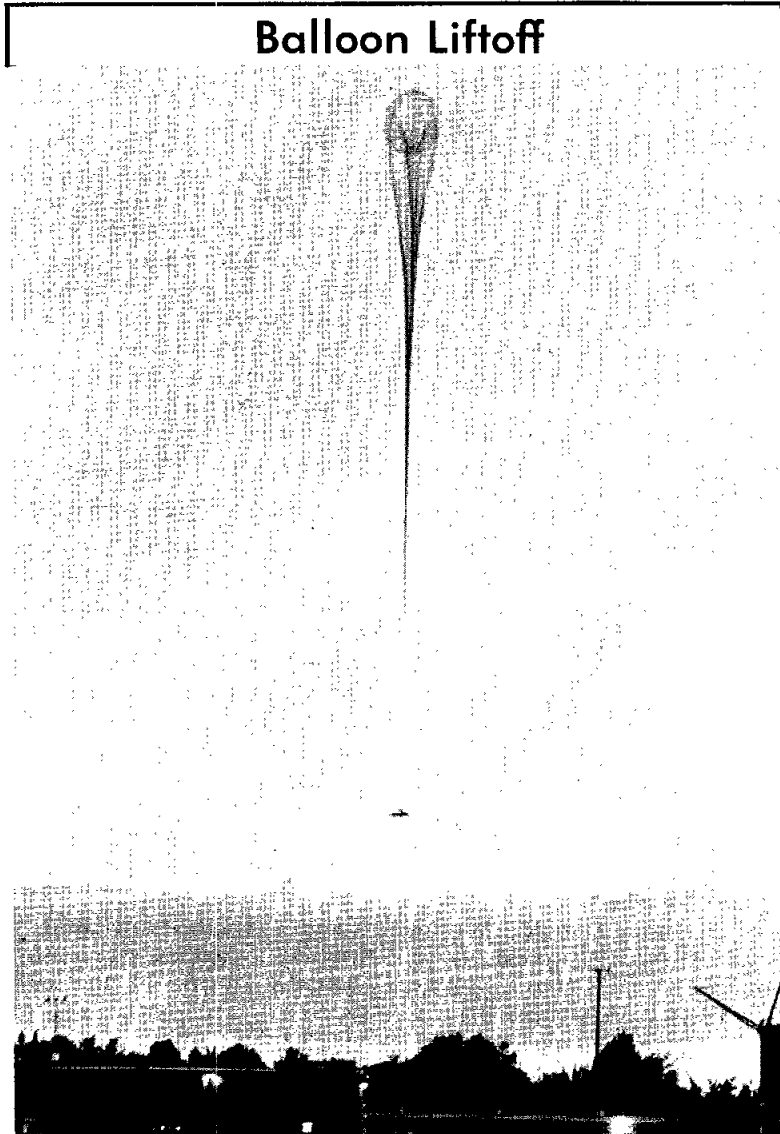
Stoney is responsible for technical and engineering aspects

of the program and reports to Apollo Program Director Samuel C. Phillips. Stoney's appointment was effective September 23.

The MSC Advanced Spacecraft Technology Division, headed by Stoney since September 1963, was abolished last month and employees were reassigned to other divisions in the Engineering and Development Directorate. (See reorganization story in this issue.)

Prior to joining MSC, Stoney was chief of advanced vehicle conceptual studies in the NASA Headquarters Office of Advanced Research and Technology. He joined NASA's predecessor, the National Advisory Committee for Aeronautics (NACA), in 1949 the Langley Research Center, Hampton, Va. Applied Materials and Physics Division.

Balloon Liftoff



CREPE HANGER—A 10.6-million cubic foot balloon lifts off at the National Center for Atmospheric Research, Palestine, Texas carrying a 1500-pound CREPE (Cosmic Ray Emulsion Plastic Experiment) payload on a 42-hour flight September 27. The experiment package, a joint effort of the MSC Space Physics Division and the University of Bristol, England, ascended to 130,000 feet before being radio commanded to release and land in West Texas near the New Mexico border. CREPE measures upper atmosphere cosmic ray nuclei.

Your Job in Focus

CSC Opens Complaint Office

A new office has been opened in the Civil Service Commission to handle complaints from Federal employees and the public involving the Federal personnel system.

The new office will report directly to Chairman John W. Macy, Jr., and will help employees with problems connected with the Federal personnel system on which they believe they need assistance from the Commission.

Services of the office will be available to help members of the public who need such help or have complaints about personnel matters.

The new service does not replace existing means for handling employee complaints and grievances. It is not a substitute for the regular channels open to employees.

The Commission will continue to look to Federal Agency managers to handle fairly and expeditiously any complaints from their employees.

However, the new office will be a single point within the Commission to which employees or the public may come or write for assistance on matters which they have been unable to resolve otherwise and to which employees may bring their complaints. It will also serve employees who believe their rights under the Federal personnel system have been adversely affected by agency action.

The new office will be one more assurance that present procedures are working adequately to provide help and assistance to employees and in protecting their rights as members of the Government work force.

Meteoroid Workshop Held Here by OART

A Meteoroid Impact and Penetration Workshop sponsored by the NASA Office of Advanced Research and Technology was held October 8-9 at MSC to review progress in the field since the last symposium three years ago.

The Workshop was attended by some 60-70 people from government and industry.

Rice Prof to Speak On Gamma Astronomy

Prof. Robert Haymes of Rice University Space Science Department October 22 will speak on "Gamma Ray Astronomy" in a program presented by the MSC Space Physics Division.

The program will be held at 3:30 pm in the Bldg 31 conference room, Room 193.

Ideas Pay Off For Suggestors

Bright ideas were converted into spendable cash recently when 20 suggestions were adopted under the MSC suggestions and cost reduction program. Awards totaled \$596.

The highest cash award went to Charles Gordon who received \$190 for suggesting improvements to a contractor's reproduction methods.

Other awardees, amounts and suggestion topics are as follows: James A. Stephens, \$40, installation of telephones; Arthur T. Deaton, \$36, briefing foreign nationals; Walter A. Luce, \$30, reduce number of keypunch transmittal sheets; Hector M. Rodriguez, \$25, Apollo CSM electrical bonding requirements; Campbell P. Canup, \$25, picnic horseshoe safety; Goree Jenkins, \$25, overhead spring-type power cords in motor pool; Mary H. Brewer, \$25, reschedule refuse pickup; Lucy M. Cruz, \$25, travel seminar; Windell G. Malpass, \$25, abrasion resistance test fixture; Charles E. Kelch, \$25, checklists for LOCPs in crew bay testing and buyoffs.

Also, John M. Fitzgerald, \$20, film reader shade; Wayne E. Koons, \$15, color code MSC telephone directory; Peter M. Smetek, \$15, will information; Helen K. Montgomery, \$15, improve outgoing correspondence; Dearon J. Bailey, \$15, improved notching guides and second \$15 award for sandblaster extension; Herbert L. Tash, \$15, buy processor instead of rent, and Jack A. Ramsey, \$15, rubber guards for aluminum ladders.

Ripe Pecan Crop Ready for Harvest

MSC's pecan crop will be harvested tomorrow on a first-come, first-served basis. The orchard is in the triangle between Fifth Street, Avenue B and NASA Road 1.

The harvest will begin at 8 am and will last until the last pecan is gathered. Flailing the trees with cane poles will be permitted provided no damage is suffered by the trees.

Paper bags will be furnished and Parking will be on Avenue B.

Xenakis Qualifies For World Meet

George Zenakis of Guidance and Control Division has earned a place on the United States team to compete in the World Model Airplane Contest. In a Labor Day competition at Bong AFB, Wisconsin Xenakis placed first in the Wakefield category and third in the Nordic glider event.

Frank Parmenter of Technical Services Division placed fourth in the Wakefield to qualify as a team first alternate.

The World Model Airplane Contest will be held next year at a place still to be determined under the auspices of the *Federation Aeronautique Internationale* (FAI).



something to....

CROW ABOUT

a good....

SUGGESTION

AWARDS AND COST REDUCTION PROGRAM

The Roundup is an official publication of the National Aeronautics and Space Administration Manned Spacecraft Center, Houston, Texas, and is published every other Friday by the Public Affairs Office for MSC employees.

Director Dr. Robert R. Gilruth
Public Affairs Officer Paul Haney
Editor Terry White
Staff Photographer A. "Pat" Patnesky

Today Last Day to Nominate LuWow Picnic King, Queen

Today is the deadline for nominations for king and queen of the October 19 LuWow picnic. Nominations, including a snapshot and information on where the nominee can be contacted, should be sent or hand-carried to Jerry Haptonstall/BG931.

Shy types who are hoping that someone will nominate them can

even nominate themselves. The crowned king and queen will each receive gift certificates. Coronation will be at 2:30 pm.

Meanwhile, among the commoners, activities are planned for keeping adults, teens and tots active all day. There will be all-day games and rides for the kiddies, a water ski show on Clear Creek from 1 to 2 pm, and the chow line will be open from 11 am to 3 pm.

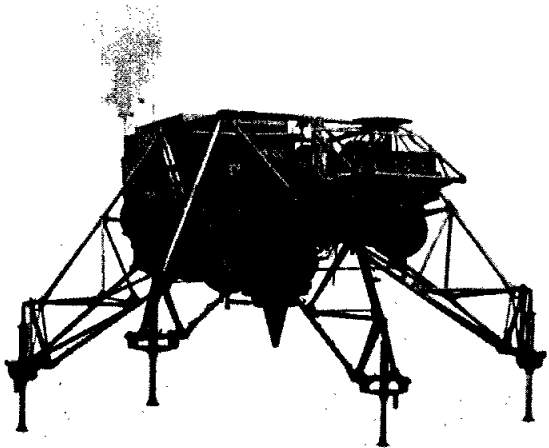
Music will be provided by two bands; one for adults and the second—strategically separated by distance from the first—playing the latest in teen music.

A special roped-off area will be set aside for horseshoe pitching to minimize the hazard to skulls by promiscuously-thrown horseshoes. All other areas of the park will be off limits for horseshoe games.

Skippers planning to commute to the LuWow in their boats via Clear Creek should be certain that all required safety equipment is aboard and the speed limit is observed. The Creek will be patrolled. Wakes during the ski show could damage boats docked at the park pier.

Tickets, for sale by EAA representatives, run \$1.50 for 13 years and older, \$1 for 6-12, and \$.50 for 5 and under. Uniform of the day: Grass skirts, sarongs, muu-muus and aloha shirts.

Fifty Feet Toward the Moon



FIRST FLIGHT—Aircraft Operations Office chief Joseph S. Algranti pilots the Lunar Landing Training Vehicle (LLTV) in its first flight October 3 at Ellington AFB. The eight-minute flight reached a top altitude of 50 feet. The LLTV is one of three to be used at MSC for training astronauts in lunar landing techniques. An earlier version of the LLTV experienced inflight troubles May 6 and pilot Neil Armstrong ejected safely.

Roundup Swap-Shop

(Deadline for Swap-Shop classified ads is the Friday preceding Round up publication date. Ads received after the deadline will be run in the next following issue. Ads are limited to MSC civil service employees and assigned military personnel. Maximum length is 20 words, including name, office code and home telephone number. Send ads in writing to Roundup Editor, AP3. Ads will not be repeated unless requested.)

FOR SALE/RENT—REAL ESTATE

Bayou Vista. 2-1-1. Central heat/air, carpeted, fenced, concreted grounds, pier, fishing, swimming, club. Equity, \$103/mo. Baker. LaMarque WE 5-3912 after 6.

3-2-2 on Clear Lake City golfcourse lot, carpeted, 26x16 familyroom, blk from elem school, \$25,500, 6% loan. G. R. Kimball, HU 8-3145.

Large beach lot on Pirates Beach about one block from Galveston Bay. Asking \$5500. Felts Stirling, 667-4532.

Fairmont Park, 4-2-2, family and living rooms, carpeted, drapes, fenced, oversized lot. \$22,500—equity, assume 6% loan. R. Kubicki, 471-3174.

1½-story Spanish in Pearland. 5-2½-2½, Playroom, patio, wooded, builtins, central heat/air, intercom, fenced, 3300 sq ft. Ray Racca, HU 5-2908.

Yearling home Clear Lake City. 4-2-2, landscaped. Close to new school. Buy equity \$2,000. \$152/month. John Miller, 488-2948.

El Lago, 4 bedroom, 2½ baths, 2700 sq. ft. ½ acre wooded lot, den, dining room. \$35,500. Myron Kayton, 877-1358.

Story-and-one-half brick, 2000 sq ft, 2 baths, family room, carpet, four bedrooms. \$23,000 assume loan. Starnes, 534-5397 after 5.

FOR SALE—AUTOS

58 Cadillac Fleetwood, clean, everything in very good working condition. Pink and white, \$500. Jack Tarpley, 534-2167.

62 Corvair, 4-dr sedan autotrans, good 2nd car. \$200. Wes Brenton, 945-3508.

62 Chevrolet 4-dr 6 cylinder, \$250. Good condition. At 2702 29th St. North, Texas City, Hope Treffalls, WI 5-7716.

68 Impala sports sedan, 7,000 miles, full power, air, AM/FM, 327 engine, Turbohydramatic. Paul Weitz, 591-3071.

64 Chevy, 4-door hardtop, power, air, R/H, automatic, good tires. \$1050. Harnage, 487-2335.

62 Alpine, 6,000 miles since overhaul, body and tires good, wire wheels, \$625 or best offer. F. Newman, GR 4-3497.

66 Mercury Colony Park 9-passenger station wagon, all extras, good condition, \$1895. Hal Hunt, 877-1377.

66 Dodge Custom Sportsvan, V8, automatic, 8-passenger, family camping van, new 40K tires, \$1825. George Bliss. Dickinson 534-3228 after 5.

65 Volvo station wagon, Model 122S, 4-dr, 4-speed, air, radio, radial tires, extra clean, \$1795. Presswood, GR 9-1159.

66 Newport Chrysler (4-door sedan), Sequoia green with gold interior, full power, factory air, 31,000 miles. Frances Kennedy, 944-9023.

66 Pontiac GTO, 2-dr hardtop 389 V-8, 4-speed, air, red, white interior, excellent condition, original owner. Paul Joyce, 932-5165 League City.

64 Impala, 2-dr hardtop, 327 cu in, red. Must sell, please make offer, Shannahan, ext. 3532 (no home phone).

54 Plymouth, running condition, new tires, 68 license and inspection sticker. All systems go! \$75. Bob Tremant, 591-2547.

68 Chev pickup. Fleetside, long bed, tonneau cover, air cond, V-8. Like new. Make offer. Jim Richards, 591-2547.

66 Buick Electra hardtop sport coupe, only 28,000 miles, excellent condition \$2200. Chris Christman, 877-4751.

67 Chevrolet Caprice, gold outside, gold vinyl interior. Air-conditioning, AM/FM stereo radio, excellent condition. \$2400. Alan Bean, 591-3814.

FOR SALE—MISCELLANEOUS

20-foot cabin sloop, keel, dacron main, jib, fibreglas over cypress hull mahogany decking, \$995. Chuck Sirmans, 932-5479 after 5.

Drum set for sale. Must sell, in good shape. Will sacrifice. Terry Watson, 946-4703.

10' x 20' portable building, completely paneled. AC needs freon, \$700 Jack Tarpley, 534-2167.

8½-foot dinghy-type scullboat with dagger board. Easy to handle, excellent for Clear Lake sailing. \$150. William Lindsey, 591-3917.

Ten-year-old blue dun, good riding horse, gaited, \$150. Tommie Sue Holder, Baytown 424-7782.

Sunbeam electric broom w/manual, \$10. Kodak Starflex, flash, film, bulbs, \$6. Marlo Krisberg, 944-4319.

Sears Marlin semiauto .22 rifle, cleaning kit, 200 rds, manual, \$35. Sportsways Spearfisherman speargun, \$10. Marlo Krisberg, 944-4319.

Mens golf clubs, complete set with bag and cart. Coy C. Summers, 591-4342.

14-ft. fibreglas boat with 18-hp Johnson motor, Gator tilt trailer and storage cover. \$350. Wayne Dyer, 944-5098.

Hospital bed and new foam rubber mattress. Both for \$95. Charles L. Bailey, 944-3871.

Starfish sailboat, 14 ft., with Comet trailer, 1967 model, good condition, new \$525, asking \$360. Rudy Tremil, 591-4296.

Full set of Encyclopedia Britannica (no year books), red binding, scarcely used, \$95. Baker, La Marque WE 5-3912 after 6.

Junior riding saddle; wall tent 8' x 10'; sporting rifle 7mm; English riding boots size 10. P. M. Gill, MI 3-8088.

Lido Fleet 40 for year-round sailing activities. Racing, classes, moonlight cruises, picnics and socials. R. A. Hoover, 408 Shirleen Drive, Seabrook, 877-3366.

Fender electric solid-body guitar and Fender Princeton amplifier. Ideal for beginner. Original \$360, asking \$160. David Fuller, 946-0275.

Honda Trail 90, 1967 model, 900 miles \$225. Noel T. Lamar, 944-5652.

14' Traveler, 33 Evinrude electric, trailer and all accessories, operated 18 hours, exceptionally clean, \$895. Noel T. Lamar, 944-5652.

MEC 600 Jr shotshell reloader, \$50. 12-ga Lee loader, \$7. Men's 10½ golf shoes, \$3. Clubs, bag \$10. 9-ft surf rod, \$20. Wilgus, 474-3918.

Pedigreed Persian kittens and cats, with or without papers. Some show type. Reasonable. Kathy Corbett, 944-167 after 5.

Galaxy 300 SSB transceiver with AC power supply, mike and manual, \$160. Cook, 946-4462.

DC power supply for Galaxy 300 or Galaxy V, \$60. New Hy-gain 5BDQ 5-band trap doublet, \$20. Cook, 946-4462.

Sell/trade 20,000 Lincoln pennies 1909-present; sets Jefferson nickels, Mercury/Roosevelt dimes, Washington quarters, Franklin halves, silver dollars, proofsets. Edwards, 932-4309.

Bing Custom Surfboard; 9' 10"; A-1 condition; Hy-Performance skeg; turns on fine. Forbes, HU 8-4238.

67 Nimrod camper trailer, sleeps 6, LP galley, sink, water, ice box, numerous extras, excellent condition. Alexander, 488-2272 after 5.

Speed Queen automatic washer, 3 speed, white color, excellent condition. Alexander, 488-2272 after 5.

Dinette table 36"x60", wood-grain Formica. \$20. Std. maple bed, \$25. Two twin-size, oak beds \$20 each. Girls 24" bicycle, \$10. Goshorn, 944-3948.

Classic motorcycle, 1957 600 cc Zundapp, opposed engine, drive shaft driven, smooth, good condition, \$300. Jim Rodman, 932-2897 League City.

Portable dishwasher, Kenmore 1½ years old, used approximately 1 year, top loader, copper tone. Stan Weiss, 645-2731 after 5.

16-hp Scott atwater motor and tank. Good condition, lower unit just rebuilt. Can demonstrate, \$75. R. Newlin, 487-2121.

Sherman, brown male Dachshund, 4 months old. \$35 plus vet bill for shots. Frances Morphew, La Marque, WE 5-6322.

8" Craftsman tilt-table saw with ball-bearing capacitor motor, extended table and wood stand, \$55. W. C. Muhly, GR 1-3762.

21' Fibreglas custom beard travel trailer, 5 mos old, dual axle, air conditioned, electric brakes, all accessories, H. Vogel, 591-4481.

Stelzig western saddle, black, excellent condition, used less than 15 times. \$90. H. Vogel, 591-4481.

Honda Sport-50 1966, approx. 3600 miles, sell \$100. J. R. Crain, 946-4458.

Dinette, chrome/yellow formica, leaf, 4 chairs, \$25. Small platform rocker, torquoise vinyl/nylon fabric, \$15. B. Niemeyer, 946-6870.

LS-16 sailboat, galvanized tilt trailer, 3½ hp outboard, many extras, all in excellent condition. Ed Simon, 488-4043.

Relax-a-cizer, all pads and straps, \$65. 63 Buick trailer hitch, \$10. Superlift shocks, \$20. B. Klotz, HU 8-1514.

Lady's and man's matching Alaskan wolf-skin parkas, wolverine face and cuff trim, little used, light and warm. \$150 each. B. Klotz, HU 8-1514.

2 Knight 2200 enclosed speakers, FM stereo tuner, 70-watt stereo amplifier, dual 1009 turntable, \$250. D. O'Brien, 946-3570.

Unused living room set, sofa, chair, 2 end tables, coffee table, 2 lamps, \$375. Nering, HU 7-0608.

Guitar, Hagstrom electric, solid body. A. H. Atkinson, 932-3664.

15½ ft. Lone Star boat, fibreglas with canopy, trailer, and 60-hp Johnson motor, new battery. Peggy Carlisle, 932-2836 after 5.

67 Honda S-90 good condition. League City, 932-3881 after 5. Gerald Waddell.

Honda 1965 CB-160 \$250. Sayers, 591-2395.

Knight 70-watt solid-state stereo amplifier, walnut case, absolutely perfect condition, cost \$120. Sell \$70. L. Brown, 591-2668.

Registered AQHA and reg. paint horses; also good riding horses. Jack Tarpley, 534-2167.

Deer lease: Cotulla, Texas, 1,350 acres, \$150 per gun. Dove, quail, deer, Tarpley, 534-2167.

G.E. electric range/oven, white. \$100. R. Young, 932-5102.

G.E. 19,600 BTU air conditioner, \$150. R. Young, 932-5102.

.22 rifle, Remington Model 66, Weaver scope, purchased July, barely used. Navy enlistee, must sell. Floyd Eaton, HU 2-7047.

2 Midland walkie-talkie radios, \$37.50 ea, new, in July, like new, Navy bound. Must sell, \$50. Floyd Eaton, HU 2-7047.

Fireplace and barbecue wood for sale. Custom cut. S. Gallamore, 472-2737.

5 gallons Devoe exterior latex house paint, dk brown. \$4/gal. C. Teixeira, HU 8-4412.

2 twin-size innerspring mattresses with twin-size bunkie boards to match, like new \$25. Jenkins, 944-6213.

Danforth/White flush-mount compass. Flat card with light. Used very little. \$35, new value \$48.50. Bob Hinson, 591-3768.

Motorcycle, A classic 600 cc Zundapp, drive shaft, twin opposed engine, full dress, good condition. \$300. Jim Rodman, 932-2897 League City.

26-ft. cabin cruiser 225 hp Gray, ship-totop, 5 years old, good offshore hull, John Mullins, GR 4-2528 after 6.

A&CR Office Seeks Info on Outside Awards

Keeping mum after receiving an award or some other form of recognition from a professional society may be an expression of modesty or humility, but the MSC Awards and Cost Reduction Office would like to know about it nonetheless.

The MSC annual award ceremony is scheduled for late November, and while all categories of inhouse awards—service, SSPs, QSIs, suggestions and cost reduction—are a matter of record, there are many types of recognition from outside organizations bestowed on MSC people that otherwise would escape the attention of the Awards Office unless modesty is overcome.

It is these types of special recognition that the Awards and Cost Reduction Office is attempting to pinpoint so that they also may be included in the ceremony. Each employee last week received a letter from Awards Office chief Joseph D. Atkinson urging that information on outside awards be forwarded to his office.

The questionnaire on the back of the letter asks for the name of the recipient, award name, conferral date, test of citation and by whom the award was presented. Information should be forwarded as soon as possible to Grace Winn/BP33 at 7283.

Need a nice bedroom carpet? Pink Plush Nylon 10'x10' plus rubber pad, perfect condition. \$45. J. Cohen, HU 8-3171.

Electric range, chests, occasional chairs, dropleaf dining table w/5 chairs, large desk, single beds, washing machine, Robinson, 944-6834.

WANTED

Want to join or start carpool from Baytown, 8:30-5:00 Normal R. Schulz, ext. 2901.

Copy of December 1965 special issue of "Proceedings of the IEE" for use in office. Jim Bates, 3816 (no home phone).

Old model airplane engines, engine parts, or old model airplane kits. Engines need not work. James Moore, 528-2101.

Bow and arrows for deer hunting. J. Tarpley, 534-2167.


Taxidermist wants ducks, geese, wild turkey for personal collection. Silgus, 474-3918.

1 used Exergenie. Larry A. Tyrrell, Jr., GR 1-4489.

Want to rent Dodge mobile home or equivalent 5 weeks during June and July 1969. R. Rogers, GR 1-1929.

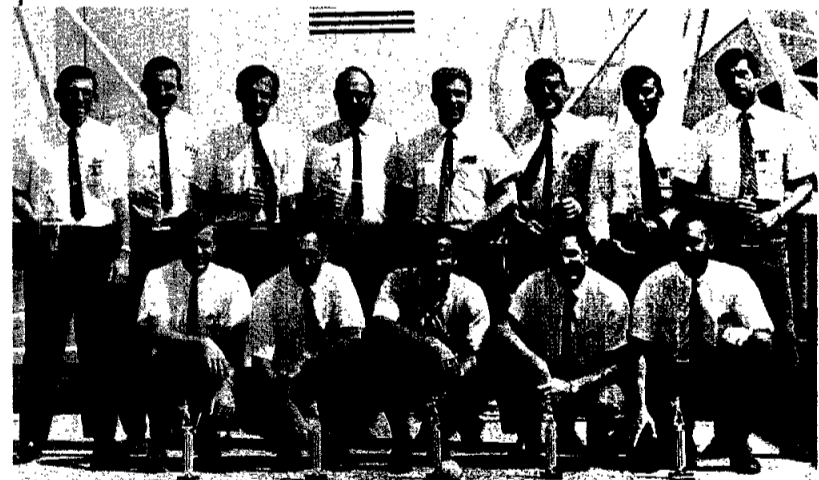
Dependable help to take care of 5-year-old daughter, help with housework 5 days, noon to 4, or 3 days a week, 8 am to 4 pm. Alan Bean, 591-3814.

When you give the United Way you give to



United Service Organizations

Pennant Winners



SLOW-PITCH CHAMPS—The Packers nailed down first place in the EAA Slow-Pitch Softball Tournament. Kneeling, left to right, are K. Vestal, B. Campbell, J. Boykin, D. Lewis, J. Stallings. Back row: J. Axley, D. Doherty, J. LeBlanc, B. Lippert, E. Chesnut, L. J. Corcoran, R. Rivas and T. Neal. Not in photo: J. Debonne and B. Foster.



FAST-PITCH CHAMPS—First place in the EAA Fast-Pitch Softball Tournament was the TRW team. First row, left to right, are: G. Hitt, B. Manders, J. Kawasaki and P. Olfers. Second row: B. Killian, D. Briggs, D. Hall, B. Bornhofen. Third row: G. Sharp, J. Eidson, M. Sogaard, P. Williams. Not in photo: B. Morris, D. Szele and T. Bohannon.

Flyers Start Ground School

The Aero Club October 15 will start its last 1968 Sanderson private pilot ground school at 5:15 pm in Bldg 2 Room 517. Tuition for the course is \$15 for new students, and no charge for repeaters.

A Sanderson instrument pilot ground school will be formed if 10 or more students register, with tuition costing \$30.

To register, attend the first class or call Charles Krpec at 2581 or 645-6089.

The Aero Club recently reduced Bonanza membership down payment by \$50. Hourly wet rates for Club aircraft are Bonanza \$16, Cessna 172 \$9, and Cessna 150 \$7.

Student pilot membership is \$50 down with \$25 refundable. Call Bob Ward at 877-3187 for Club information.

Rifle Aiming Checks Planned

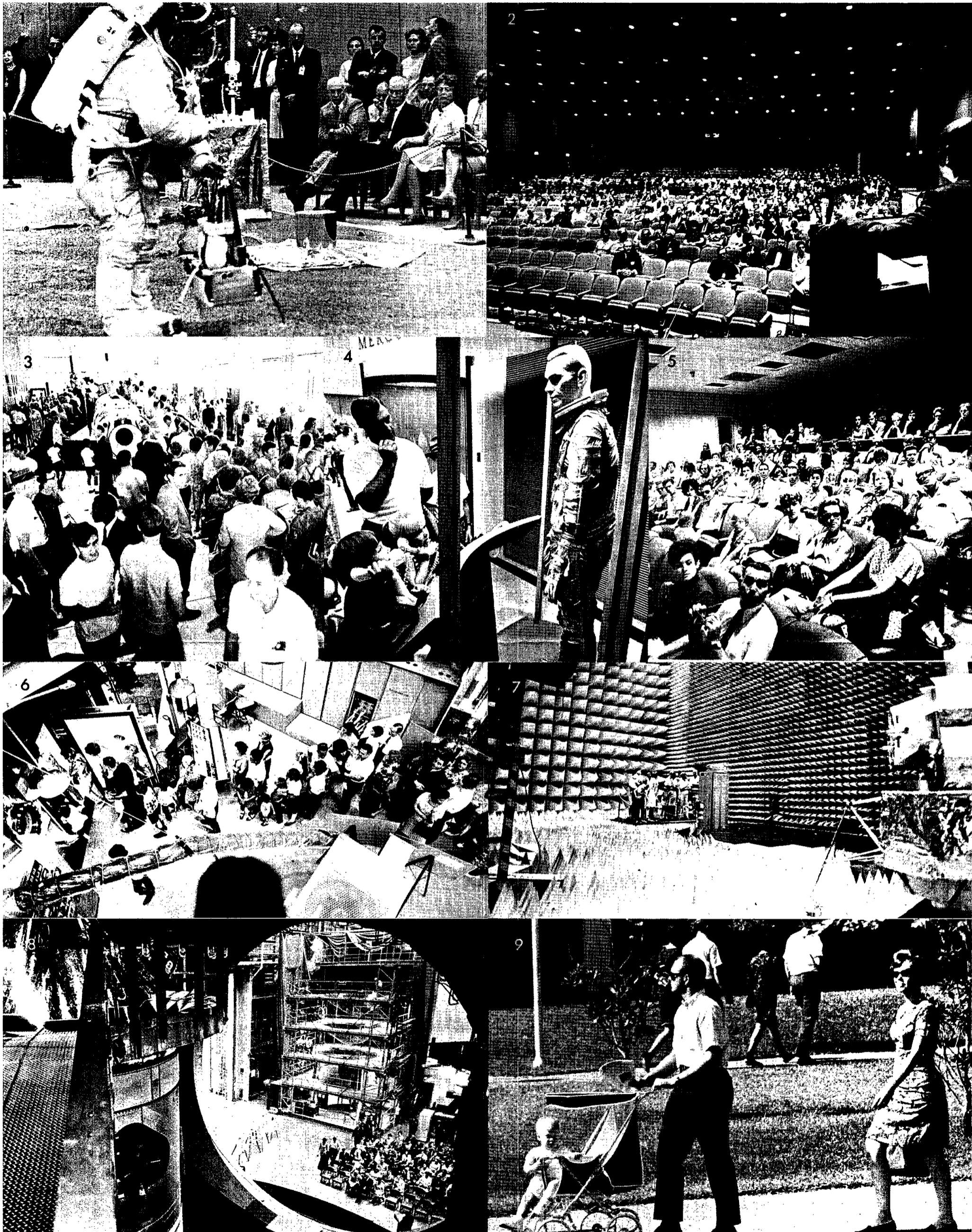
A rifle that shoots where the hunter aims increases the probability of a successful hunt, and MSC employees are invited to check their rifles at two sighting-in days this month sponsored by the Pearland Sportsman's Club.

The sighting-in days will be October 19 and 27 from 1 to 5 pm at the Club's range behind the Channel 8 TV tower south of FM 528, three miles northeast of Alvin.

Ranges of 100, 200 and 300 yards are available, and sighting-in charges will run \$1 per rifle. The Club will furnish targets and range assistants.

For additional information, call Jim Raymer at 2681 or 471-4094, or Carroll Hopkins at 4717 or 944-2838.

MSC Observes NASA 10th Anniversary With Open House Program



LARGE TURNOUT—An estimated 25,000 persons visited MSC facilities during the September 28-29 open house marking NASA's tenth anniversary as an agency. The first day was for employees and their families and invited business and civic leaders. The photo montage above gives a cross-section of the two-day event. 1.—MSC Director Robert R. Gilruth, Houston Congressman Bob Casey and Mrs. Gilruth watch a demonstration of the Apollo Lunar Surface Experiment Package (ALSEP) in the centrifuge area of Bldg 29. 2.—Gilruth speaks to invited guests and MSC supervisors on the achievements of the past ten years.

3.—Visitors line up to view the Gemini V spacecraft in the Auditorium lobby. 4.—The small fry enjoyed exhibits that talked and moved. 5.—Workings of Mission Control Center are described in the viewing room. 6.—Chamber B's innards are viewed first hand. 7.—MSC's quietest room, the anechoic chamber. 8.—Apollo spacecraft 2-TV1 towers above Chamber A's open door as invited guests are briefed on vacuum chamber testing. 9.—Some rode while others walked.