

Eleven Make \$435 In Suggestion Awards

Eleven more MSC employees have profited — to the tune of \$435 — by thinking up ways to do job better, safer or more economically.

The largest award was \$200, split equally between James H. Barnett, Floyd L. Harrison, Ralph J. Marak and Matthew I. Radnofsky, all of Crew Systems Division.

They invented an improved lifecraft stablizer. In tests made by MSC, the new style raft with a water-inflatable keel would not capsize even under strong helicopter rotorwash.

A \$60 award from NASA Headquarters was approved for Joyce K. Patterson of Financial Management Division for a suggestion previously approved and adopted here.

Her per diem rate chart to assist travelers in computing travel advances and reimbursement claims has just been added to the Agency Travel Regulations

and, therefore, the additional award given.

Edith L. Todd of Propulsion and Power Division earned \$25 on each of two suggestions, one a tear-off comment sheet on which employees can request personnel information, the other a procedure to assure proper on-shelf rotation of copy machine paper.

AWARDS — Suggestion Committee Chairman Jack Kinzler with award winners Radnofsky, Barnett, Marak, Harrison, Williams, Thompson, Guadiano and Mansfield, standing, and Todd, Patterson and Waln seated.

Mike Guadiano of Information Systems Division earned \$25 for modifying a commercially available high-purity filter unit to minimize contamination of delicate electronic components during washing with particle-free liquids.

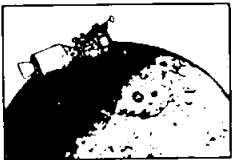
Kenneth I. Mansfield, Crew Training and Simulation, suggest-
(Continued On Page 3)



ROUNDUP

NASA MANNED SPACECRAFT CENTER

HOUSTON, TEXAS



Vol. 11 No. 24

October 13, 1972



EAA Trio Tops 200 Tickets Each To Take Picnic Sales Contest Honors

Three Employees Activities Association representatives who sold nearly 800 picnic tickets between them have been awarded for their efforts.

Top sales award went for the second straight year to Margaret McClure of E&D Propulsion and

worth a pen and pencil set.

Right behind him with 232 sales was Dawn Hoyle of Institutional Personnel Management Branch in the Personnel Office. Her prize was a brocade jewel box.

Honorable mention goes to Linda Trippodo and Milt Heflin of Flight Operations Directorate and to Dee Cosby, E&D.

A picture of the winners appears on page 3, and a photo of the culprits partly responsible for some staggering statistics — plus the statistics themselves — can be found on page 4.

And that, we promise, is the last of the picnic stories until next year. Except . . .

Enough suggestions have been made that the picnic be held in the spring rather than the fall with its unpredictable weather and conflicting activities that the next Roundup will carry a ballot to determine preference.

FISH STORY — Tell somebody there are catfish in the MSC ponds and they'll smile politely. Tell 'em there's a gal who has the cats eating out of her hand and they'll bust out laughing. But here they are, along with three ducks trying to get into the act. The catfish, a dozen or so albinos among them, range up to almost a foot and a half long. The charmer feeding them cornbread from the cafeteria is Wanda Marquis of McDonnell Douglas. She works in Building 5. By the way, fishing the ponds — with hand or hook — is a very definite no-no.

Power's Reaction Control Section. She earned a travel clock for the 295 tickets she sold.

Second high was Paul Jaschke of ASPO Experiments and GFE Project Engineering, 237 tickets

Joint Mission Working Groups Get Together in Moscow

United States and Soviet working groups began two weeks of meetings in Moscow Monday on the Apollo-Soyuz Test Project.

The joint mission was provided for by the agreement which President Nixon and Chairman Kosygin signed in Moscow last May 24.

The mission is designed to test equipment and techniques which will permit cooperative scientific missions as well as establish an international crew rescue capability in space.

Three of the five working groups established during meetings here in July made the trip

to the Soviet Union.

They are Working Groups No. 1, Mission Model and Operational Plan; No. 3, Docking Mechanism; and No. 5, Life Support Systems and Crew Transfer.

Representatives of North American Rockwell Corporation, prime spacecraft contractor for the mission, interpreters and secretaries bring the total number in the U. S. group to 27.

Goal of the meetings is to reach decisions in the following areas: spacecraft operating pressures, provisions for television as a docking aid, requirements for

extravehicular activity, mission sequence including launch windows and trajectory plan and detailed timelines.

A detailed review of the docking mechanism design also is being conducted.

Members of the two other working groups, No. 2, Control and Guidance, and No. 4, Communications and Tracking, and their Soviet counterparts are expected to meet here in November.

Glynn S. Lunney, manager for ASTP, Apollo Spacecraft Program, heads the U. S. group. MSC working group members

are: Hugh Scott, Clarke Covington, M. P. Frank, Col. Thomas P. Stafford, Robert Ward, Edgar C. Lineberry, Donald C. Wade, Robert White, William Creasy, Lawrence Williams, C. C. Johnson, John Schliesing.

R. E. Smylie, W. W. Guy, Dr. W. R. Hawkins, Raymond Zedeker, and H. E. Smith.

Accompanying them are: Dr. O. E. Anderson, Jr., NASA Headquarters Office of International Affairs.

George Jeffs, Kenneth Bloom and Alex Sementovsky, North American Rockwell.

Alex Tatistcheff, Natalie Lat-

ter and E. N. Harrin, interpreters, and Betsy Bednarcyk and Lois Ransdell, secretaries.

EAA Beacon Tells 17 Viewing Plan

With parking passes at a premium — perhaps even non-existent — for the KSC viewing area for Apollo 17 liftoff, MSC and contractor personal planning to watch the launch in person will do well to check the upcoming issue of the "EAA Beacon".

(Continued On Page 2)

Unique Talent, Equipment Hunt Ways to Predict Disease

A unique collection of biomedical research talent and instrumentation being applied toward a quick and accurate method of predicting infectious diseases in astronauts may contribute toward the improvement of medical care available to the general public.

Longer duration manned spaceflight missions, beginning with Skylab, impose new demands of high resolution assessment of the health status of crews prior to and during flight.

Routine analytical procedures currently in use in clinical laboratories do not normally provide the sensitivity necessary to (1) detect subtle changes in physiological functions or (2) detect infectious processes during their early incubation period.

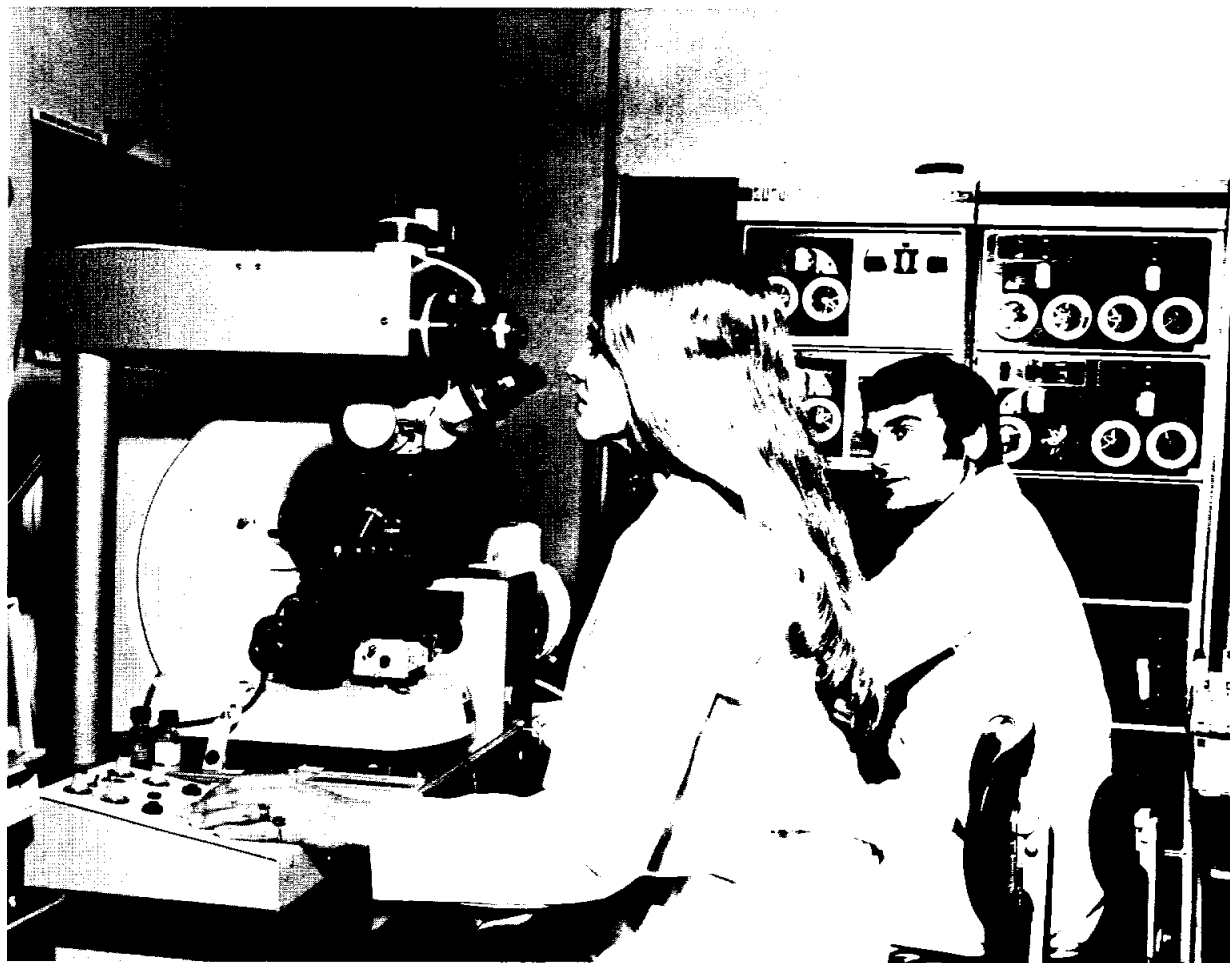
A system of analytical procedures utilizing the latest sophisticated laboratory instrumentation in the fields of spectrophotometry, cytofluorometry, and electron microscopy has been developed for the manned Skylab pro-

gram by researchers in the Manned Spacecraft Center's Cellular Analytical Laboratory.

These procedures provide NASA with a new set of techniques to supplement existing laboratory analyses for improving the capability for the early detection of illnesses and for a better assessment of flight crew health status prior to and following spaceflight.

The Cellular Analytical Laboratory of the Life Sciences Directorate is the prime in-house NASA facility active in the development and implementation of early disease detection and identification through structural and chemical analysis of the cellular elements of man's blood.

Under the direction of Dr. Stephen L. Kimzey, the Cellular Laboratory represents a unique medical research effort which utilizes the latest in high resolution analytical procedures for the chemical and structural characterization of individual cellular elements of the body.



SCIENTIFIC SLUETHS — Representative of the biomedical research talent and the sophisticated laboratory equipment being applied to the search for a quick and accurate method of predicting infectious diseases in humans are Dr. Stephen Kimzey, chief of the Cellular Analytical Lab, and Research Analyst Linda Burns of Northrop Services Inc. and instrumentation in the fields of spectrophotometry, cytofluorometry and electron microscopy. As part of the research, red blood cells are examined under electron microscope for structural changes and by X-ray analysis for alterations of internal electrolyte composition.

Although the research talent and instrumentation utilized are not in themselves new, their assembly in one facility and their coordination in a single research project distinguishes this laboratory from any in the world.

The medical research team, composed of government, in-house support contractor (Northrop Services, Inc.) and university research scientists and technicians have, over the past several years, developed many of these procedures in blood cellular analysis, first for use in the manned Apollo flights and now considerably improved for Skylab.

The Cellular Analytical Laboratory is responsible for coordination of the Skylab M110 Medical Experiment Series which includes five individual experiments and seven scientific investigators outside of the NASA.

This activity includes scheduling pre- and inflight blood sampling as well as postflight blood sampling and the preparation and distribution of these blood samples to these outside scientists.

In addition, the Cellular Analytical Laboratory is responsible for the completion of one of these five experiments.

In Experiment M115, Special Hematologic Effects, these cell analysis techniques will be used extensively to evaluate the influence of long duration spaceflight on man's immunological and hematological systems.

Lymphocytes (a type of white

blood cell) will be examined for changes in the intracellular nucleoprotein content and distribution which occur in response to a foreign challenge (viral or bacterial). Such changes precede by several days the changes in body fluid composition measured by standard laboratory procedures.

These data, which are collected from individual cells and analyzed by digital computer, are used to establish the reactive capability of the lymphocyte.

Also being applied to this program is a complete electron microscope and an electron probe x-ray microanalyzer.

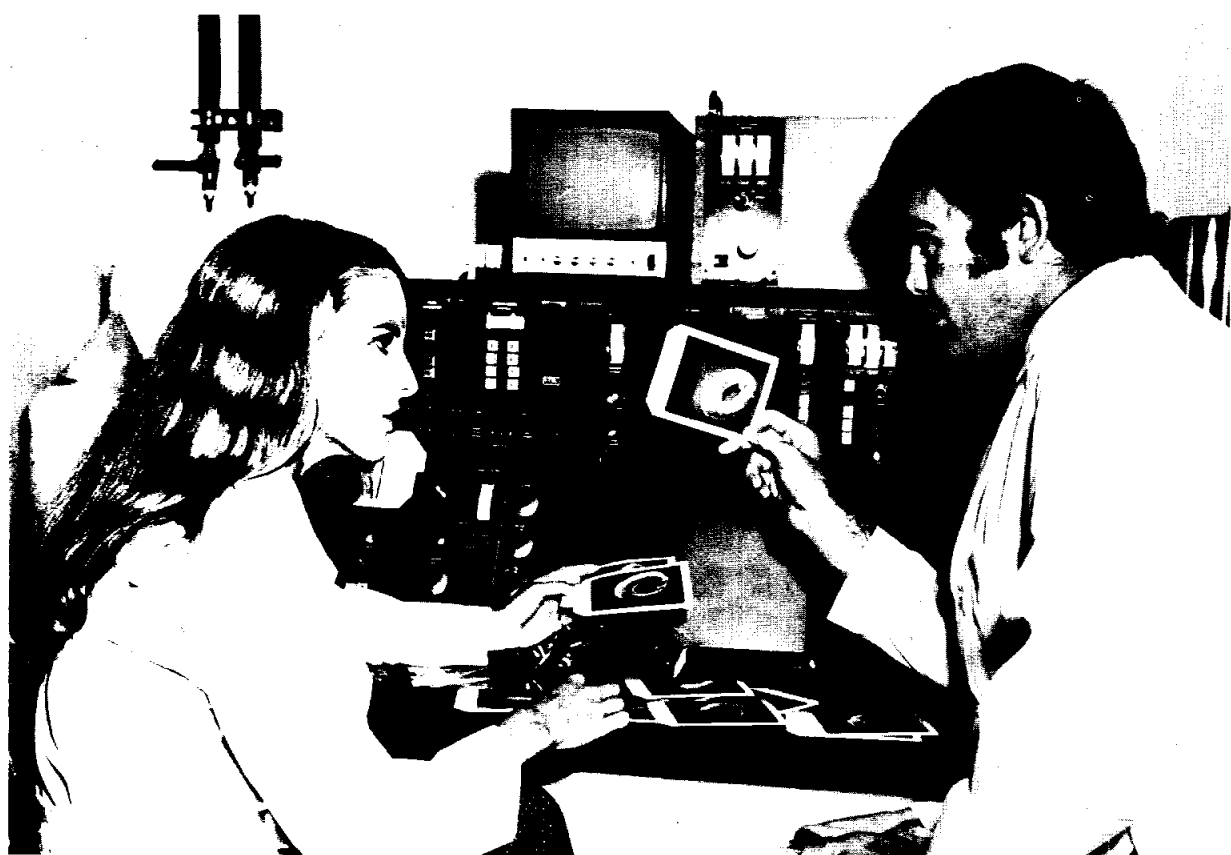
Red blood cells are examined by electron microscopy for structural changes and by x-ray analysis for alterations of internal electrolyte composition.

Such changes might be expected to occur if the characteristics of the blood plasma were changed.

In this sense, the red cell represents a model system to evaluate the functional state of other body tissues and processes.

Dr. Kimzey explains that in addition to improving the quality of medical assessment of spaceflight crews, the work of the Cellular Analytical Laboratory may contribute toward the improvement of medical care available to the general public.

Toward this end a series of cooperative efforts have been established with medical schools in the MSC area and with other government agencies throughout the country.



MSC Golfers Feed Hungry Westwood As Engert Wins Next-to-Last Meet

The eight tournament of the MSC Golf Association was played Monday at the Westwood Golf Course and the course fences and blue lakes made off with as many golf balls there were golfers.

The flight winners were:
Championship - first Max Engert

Beacon

(Continued From Page 1)

The Employees Activities Association will outline its plans to charter air-conditioned buses to transport spectators to the viewing site. Deadline for determining the number of buses needed is October 25, so interested personnel should be sure to read the "Beacon".

75 (71), second Cliff Crouch 84 (72), tie for third Bill Dusenberry and J. Shinkle 85 (74).

First - Bob Gordon 87 (71), second N. Harper 89 (72), third M. Jones 90 (73), and tie for fourth V. Carter 91 (76) and C. Laird 92 (76).

Second - first R. MacDonald 89 (68), second Bill Ramey 94 (75) and tie for third J. Sanders 90 (76) and C. Jackson 94 (76).

New Members - first T. Strickler 80 (68), tie for second R. Jacobs 88 (72) and C. Jones 97 (72), and tie for third T. Semenuk 82 (74) and T. Jennings 97 (74).

The ninth and final regular tournament is scheduled for Inwood Forest Oct. 23.

EAA Has Circus Bargain Tickets

Half-price tickets for the November Shrine Circus at the Coliseum will be available from EAA representatives beginning Monday and at the cafeterias during the week before the circus.

The regular \$5 tickets will cost MSC and contractor personnel \$2.50 and are for the best seats in the house. The Sunday show starts at 6.



Roundup Swap-Shop

Swap Shop advertising is available to MSC an on-site contractor personnel. Article or services must be offered as advertised, without regard to race, religion sex or national origin. Ads should be 20 words or less including home telephone number. Name and office code must accompany, but need not be included in, ad copy. Typed or printed copy must be received (AP3 Attn: Roundup) by Thursday of the week before publication.

Article or services must be offered as advertised, without regard to race, religion sex or national origin. Ads should be 20 words or less including home telephone number. Name and office code must accompany, but need not be included in, ad copy. Typed or printed copy must be received (AP3 Attn: Roundup) by Thursday of the week before publication.

BOATS

18' runabout with 75hp Johnson, large-wheel trailer, full canvas cover, other extras \$750. Kubiak 938-4583 LaMarque 18' Cabin tri-hull, Sportsman trailer, 115 Evinrude \$2400. Duke 645-8919 after 5. 18 1/2' two-place kayak with dbl paddles, flotation \$100. Jaderlund 334-1406. Luxurious 16' speedboat with 120hp ab, trailer and equip incl pro ski-tow bar, 71 model n mint cndn reduced to 02995. Bicnd 333-4580

Info and prices: used Lido sailboats for sale by owners. Hoover 334-2392. 18' Lyman clinker built wooden lapstrake, 90hp Evinrude, galy trailer, loaded incl shrimping equip, xlnl cndn, bargain at \$1250. 944-4153.

Slalom ski needs work \$5, anchor \$5, orange kapak lifevests \$3 ea Allgeier 333-4627

15' fiberglass (convertible) boat, electric start outboard, trailer and acces \$495 554-3736.

13' Lane Star Chrysler sailboat with Comet trailer, boat and sails xlnl cndn, ready to sail \$795. Maas 488-2965 after 5.

PROPERTY & RENTALS

El Lago large custom home on wooded lot with lake view and deluxe features, priced to sell by owner, lower 40s 6 percent loan. 334-2082.

PETS

Pretty black registered quarterhorse, mare, 7yrs. Neal 471-3119.

AKC Sheltland sheepdogs (Sheltie) 1 female 3 male puppies, champ stock, pft for children \$100. White 334-2287

Pug puppies, males 4 mo, papers shots \$75 488-3514

Half-Burmese half-Persian kittens, playful, pan-trained, 7 wks free to good home. Kubiak 938-4593.

Unusual pet, boat the Christmas rush. 4' ice constructor, incl 10 show case and smaller retaining cage \$70. Rubenstein 334-2354.

AKC rig cocker spaniels 6 wks, buff or champagne Diamond 482-1697.

Two half-dalmation half-jumped-the-fence puppies free, beautiful & healthy, 6 wks Stanley 483-5506.

MISCELLANEOUS

Hickory rack cartop carrier \$10 Craftsman lawn mower with B & S engine & windup starter \$10. Craftsman reel type lawnmower \$5 as is. cartop sleepertent \$50x 4 \$35, 2 place space heaters \$5 ea 554-3736

Two 480 x 8 trailer tires & 1 B 1 wheel all xlnl cndn, tires \$5 ea, wheel \$6 or all for \$15. Griffin 333-3512.

Duck hunter spd 4hp outboard with garage stand dependable. \$40. 334-2082

Heavy solid brass antique hanging lamp 944-8717.

Hiking boots, finest quality, size 7N, suede finish, Dunham's waffle stompers worn only few times, new \$23 sell \$15. Welch 441-1427.

Misc electronic components & equip reasonable. Crumier 334-1463.

6 gal gas tank for Mercury outboard, gudge & both sides of coupling, barely used \$15 Allgeier 333-4527.

Four G-78 15 General jumbo belted tires \$50 all. Rhodes 483-7505

New 6 intr transceiver cost \$125 sell \$65, GE Progress line 2 intr transceiver \$85 with xtlx, Viking Ranger lk new \$95 Fox 333-4460.

30.06 sporterized rifle pft cndn \$100. Nassiff 482-7546.

Fisher SS 2 speaker, Allied 83YX787 tuner, Allied 83Y2762 amp. Dunn 472-7478

Fender stratocaster guitar, neck in gd cndn, wire for stereo \$85, Fender Deluxe.

Reverb amp pft cndn \$125 Wade 941-8247 after 4.

Lentar 200mm prsset lens for 35mm SLR T mount system with case & lens hood, pft \$30. 488-3966.

4 x 5 Crown Graphic press camera with f4.7 Kodak Ektar lens, synch shutter & rangefinder, 10 film holders, carrying case & other acces \$75. 334-1869 after 5

Wollensak Model 1280 stereo tape recorder with detach spkrs, reel-reel, 7 1/2 and 3 1/2 plus 24 mostly classical prerecorded tapes \$370 value \$250. 334-1869 after 5.

Free ceramics lessons for beginners Mon and Wed evenings, make your own Christmas, bargain greenware. Marjorie 433-4441.

Arlley flute & case gd cndn \$80. 482-3104

Portable public address system 25W ideal for outdoors, essentially new \$100. 333-3291.

VEHICLES

71 Opel 1900 white with dk blue vinyl roof, air, AM radio, xlnl mileage, xlnl cndn. Boone 333-3565.

64 Chev wgn, air pwr, gd mech cndn \$200. 334-2082.

79 Ford LTD Brougham 4-dr hdtip, air, radio, pwr steer, auto, 429-4bbl, lo-mi, clean \$2195. Collins 482-7780.

66 Corvair 500 2-dr, std, gd tires, 1 bent fender but gd mech cndn \$300. 554-2798.

61 Plymouth sta wgn xlnl cndn, air, pwr, auto \$250 or best offer. 488-6978.

71 Kawasaki 175 xlnl cndn, 3000 mi \$475. Zup 482-7156.

68 Chev Caprice 2-dr hdtip, air, pwr steer, radio, clean \$1250. Hommersley 482-2231.

69 Dodge van, LWB, auto, xlnl \$1495. 331-3336.

67 Delta 88 spt cpe, pwr, air, hydrmatic, 425 engine, vinyl interior, xlnl cndn \$1050. 474-2400 after 5.

For rent day or week 72 Jayco hdtip fold-down camper, kitchen, icebox, sleeps 8, below normal rates. Kilbourn 482-7879.

65 VW bus, one-owner, rebuilt engine, new battery, fair tires, gd cndn \$750 or offer. Norris 334-1777.

70 Austin-America, 11,000 actual mi, xlnl cndn, ideal 2nd car \$600 firm. 488-2307.

66 Rambler 4-dr, air auto, lo mi \$500. Revs 482-6465.

72 Calica Toyota, air mugs, 4-spd, heat, radio and super tune kit \$2800. 489-0080 x285.

64 Chev BelAire sta wgn vry clean, recent repaint, orig owner, ad mech cndn. Egleston 334-2897.

72 Honda SL100 xlnl cndn, 1800 mi \$395. Vince 334-1110.

70 Riviera GS, all pwr & options incl vinyl top, FM stereo, chr wheels, buckets \$3400. Land 782-6904

72 Vega Hatchback, air, auto, tape player other extras, \$3000 mi \$2650. Carnett 483-2708.

71 Suzuki Trail 185cc, xlnl cndn, set of set of knobies plus street tires \$550. 487-4023 after 4.

71 Pontiac Catalina 4-dr, xlnl cndn, air, pwr steer, auto, new tires, air shocks, equalizer hitch & elec brakes if desired \$2575. King 483-2471.

70 Triumph TR6, radial tires, radio, service manuals \$2200. White 488-1024.

63 Chev Impala 4-dr 327, air, grt shape, new tires \$400. 488-2713.

62 Volvo 4-dr, 4-spd, orig owner, xlnl cndn \$650. Olasky 488-3988.

60 Marris Minor 1000, 5 gd tires, new batt, runs ruff but gd work car. Grogan 554-5417 after 5.

69 Chev Impala Cust Cpe, air, pwr, steer, radio, buckets console, vry clean \$1650. Beall 488-5317.

69 VW square-back, air, radio, 35,800 mi for NADA loan value, 331-3463.

24" boys Schwinn bike \$20, 20" boys Schwinn with banana seat \$18, Jaderlund 334-1406.

66 Pontiac Catalina, loaded. Benney 481-2381.

Healthkit 5hp trail bike \$165, 554-3736. Maverick camper with closet, stove, refrig, table, sleeps 4 \$500, Duke 645-2700 Tue-Fri 8 to noon, 645-8919 after 5.

68 Chevella Malibu spt cpe with air, pwr, steer, stand shift radio, heat, new paint, orig owner \$1195, Maas 488-2965 after 5.

HOUSEHOLD ARTICLES

O'Keefe & Merritt range with hood cover, needs thermostat repair \$75, yr-old Signature window air conditioner 15,000 BTU \$150. Rines 862-8181.

1-ton Gibson a/c 220V \$45, new upholstered recliner chair \$30, lt brown vinyl hideaway type couch \$45, 9 x 12 oval brown-tones braided rug \$7.50, blond Formica coffee table \$3.50, bunk beds steel springs no mattresses \$15 pr, 554-3736.

Baby bed & mattress \$10. Benney 481-2381.

GE white 7-yr-old comb refrig-freezer 16 cu ft, xlnl mech cndn, \$120. Ligrani 334-3052.

GE clothes dryer 16 lb cap, 3 temp settings, 5 yrs old, gd cndn \$75. 479-3848 after 6.

Black imitation wrought iron lighting fixture all matched, hanging lamp, chandelier

Join the Payroll Savings Plan.



Sweeten your savings.

Eleven—

(Continued From Page 1)

ed relocating parked buses between buildings 5 and 35 to let pedestrians more clearly see oncoming traffic, a safety improvement worth \$25.

Richard E. Thompson, Photographic Technology Division, inserted a small optical imaging system between camera lens and film to record on the film the lens aperture and setting along with the object being photographed, a \$25 idea.

Margaret E. Wain of ASPO Test Division suggested redoing the visitor direction signs around the center to a more international motif that even non-English-speaking visitors can follow, for which she earned \$25.

Troy Williams, Information Systems Division, also made \$25 for a visitor-aid, the relocation of signs to eliminate potential confusion in directing visitors from parking lots to the auditorium.

IEE To Hear Patent Attorney At Oct. 26 Meet

"Intellectual Property Protection" and how it applies to the practicing engineer's inventions is the topic of the October 26 buffet meeting of the Clear Lake Subsection, IEEE.

Speaker at the NASA Holiday Inn program will be Houston Patent Attorney Bill Berryhill.

Social hour begins at 6, buffet at 7 and the program at 8. Reservations: Opal at MSC extension 3669.

November 18 Is "NASA Day" At Astroworld

Six days after it has closed for the season, Astroworld will open its gates for MSC and contractor personnel exclusively.

Saturday November 18 will be "NASA Day" and tickets at \$2 each are available from EAA representatives — kids under three free.

Since the park will have officially closed, no tickets will be sold at the gate.

NCMA Mixes Business, Games At Annual Fete

Space City Chapter of the National Contract Management Association held its Annual Golf and Games Day last week at Clear Lake Country Club and managed to work in some business as well.

Golf winners were Steve Donley of General Electric first, Billy Kelly of MSC second and Ollie Seeley of Boeing third. Non-member winners were John Jones of MSC, Doug Skinner, Jessie Harrell and Pete Gist, all of Northrop Services, first through fourth.

Jones also won "longest ball" and Norm Kraus of Boeing took "closest to the hole" honors.

"Other games" winners was Tony Riggan of MSC.

The business? NCMA's 1973-74 budget was presented and approved.



SUPERSALESMEN—Selling nearly 800 tickets between them, the three prize-winners being honored by the top politicians of "Election '72" — that was this year's MSC family picnic in case anybody's forgotten — played a big part in making the get-together a landslide success. Officials and winners (see story on page 1) from left to right are Picnic Ticket Chairman Evon Collins, Co-chairman Jim Rayl, supersalesmen Dawn Hoyle, Margaret McClure and Paul Jaschke, and Co-chairman Betty Cornett. For Margaret, first-place was a repeat — she was Number One in '71 as well.

ROUNDUP

NASA MANNED SPACECRAFT CENTER HOUSTON, TEXAS



The Roundup is an official publication of the National Aeronautics and Space Administration Manned Spacecraft Center, Houston, Texas, and is published every other Friday by the Public Affairs Office for MSC employees.

Photographer: A. "Pat" Patnesky



THE CULPRITS — Some of the people responsible for shoveling two and a half tons of meat and pouring nearly 1200 gallons of beer into MSC picnic-goers (see statistics below) were Marvin Matthews, Gordon Houghton, Marilyn Bocking, Ed Raney, Evon Collins, Betty Cornett, Kathryn Harvey, Lee DeVore, Pat Elliott, Vic Ettredge, Karla Garnuch and Suzie Cardenas.

Picnic Proves Statistically Staggering

Among the aftermath reports from the MSC picnic committee is one that shows calorie-counting went by the boards for that day.

The statistics show that between 11 a.m. and 3 p.m. on Saturday September 23 MSC contractor families packed away:

Beef	1 3/4 tons
Sausage	3/4 tons
Beer	1,152 gallons
Soft drinks	725 gallons
Ice	4 tons
Popcorn	8,000 servings
Potato Salad	1 1/4 tons
Bread	450 loaves
Beans	325 gallons

The report omitted figures on aspirin and Alka Seltzer.

Donald K. Vaughn Died October 1

Donald K. Vaughn, retired last year for medical reasons after nearly ten years at MSC, died October 1 of a cerebral hemorrhage. He was 48.

Vaughn transferred from the Washington D. C. area in September 1962 as a mechanical engineer with Guidance and Control Division. Later he worked as an aerospace technologist in Technical Management.

Recreation Show Discounts Ready

Discount coupons for admission to the October 18-22 Annual Gulf Coast Mobile Home and Recreational Vehicle Show in Astrohall are available from EAA representatives.

The dollar-off coupons will get couples into the show for \$2. Kids under 7 are free.

Basketball Organizing Meet Called; Gals To Decide Between Two Sports

With the 1972-73 basketball season just around the corner, EAA Vice President of Athletics Jeri Brown has called an organizational meeting for 5:30 October 25 in the Ellington gym.

The men's schedule calls for four leagues of six teams each, but the women have a choice to make—six basketball or eight volleyball teams, with the decision to be made by the gals attending the 25th meeting.

Men's play will feature, as in the past, an "A" league for play-

ers wanting serious competition, and a "B" league for basketballers out for the exercise.

Contractor teams are welcome but will be accommodated only after MSC and Ellington teams are entered.

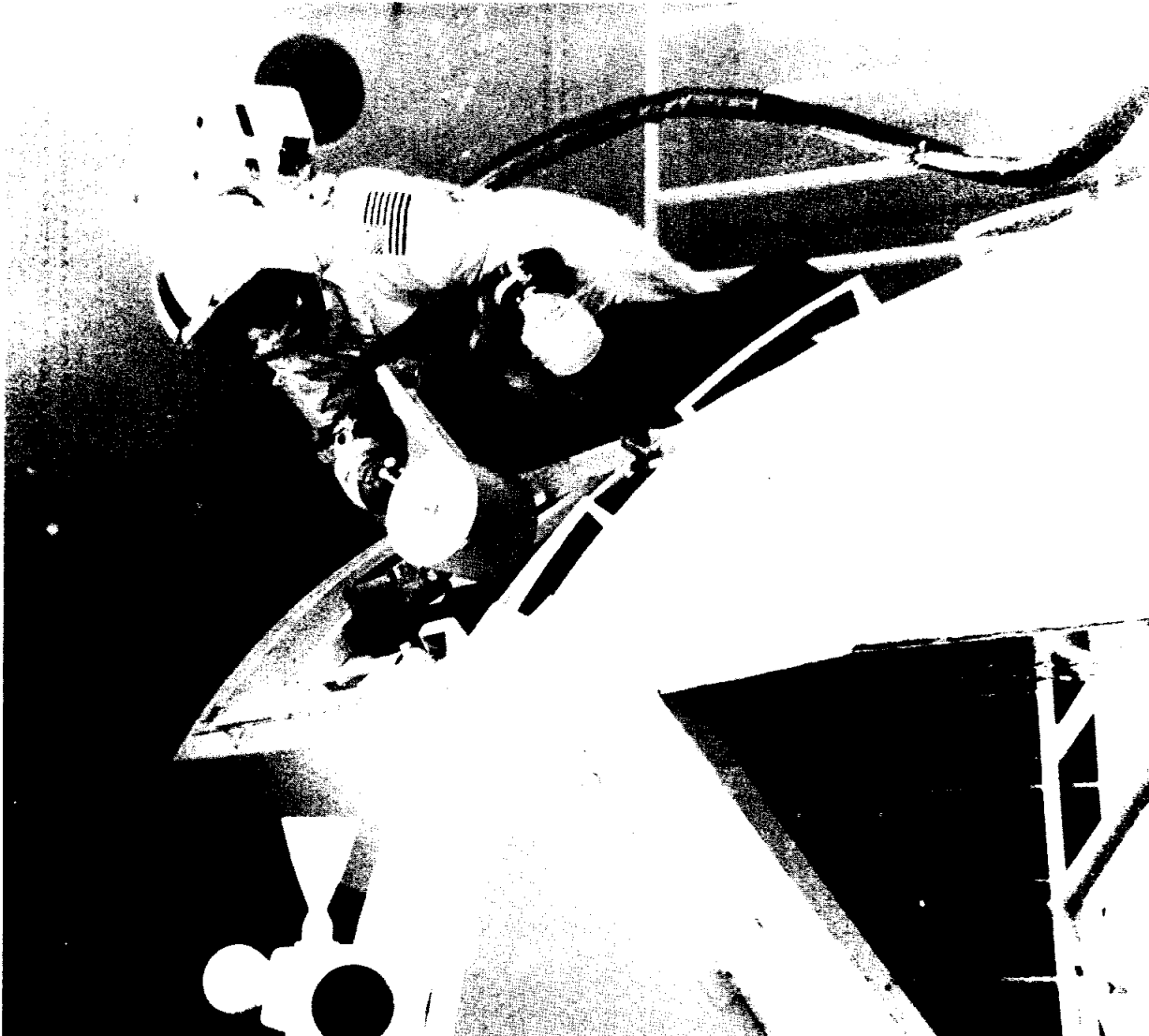
Already organized or prospective teams should send a representative to the meeting to help decide on a playing night. Women's basketball and volleyball representatives should be ready to present their cases and to pick a playing night.

Skeet-Shooting League Planned, Free Shoot Set

A handicap skeet-shooting league is in the offing for MSC personnel, with an organizational meeting including free shooting and procedural and safety discussion to be scheduled for early next week.

The weeknight shoots are planned for the Winchester White-wing Gun Club in Pasadena. Instruction and guns will be available.

For information: Ken Suit at MSC extension 2693.



WATER WEIGHTLESSNESS— The closest thing to floating in space is doing it in the neutral buoyancy tank, as Apollo 17 Command Module Pilot Ron Evans demonstrates. This is part of the training he is undergoing to prepare him for a spacewalk from the command module back along the service module to the scientific instrument module—the so-called SIM bay. One of his duties during the extra-vehicular activity will be to retrieve film as he is here, from the mapping and the panoramic cameras in the bay. Evans' EVA is scheduled during the Last Apollo's return trip to Earth.

Hams To Auction Radio, Electronic Gear Tomorrow

Radio and other electronic equipment will be auctioned by the MSC Amateur Radio Club tomorrow at 10 a.m. in the community building at the Harris County Park just across from the Boys Home on NASA 1.

Anyone wanting to sell or buy equipment can submit or inspect it at the community center from 8 a.m. on.

Auctioneer Ed Hamblett, MSC extension 5867, can give further details.

JIMMY WARREN MEMORIAL BOWLING LEAGUE

Ascenders	15	5
Team No. 9	14	6
Alley Oops	14	6
Ball Busters	11	9
Hexes	11	9
Hertz	9	11
Strikeouts	9	11
Clowns	9	11
Spoilers	9	11
Chokers	9	11
Pin Pounders	8	12
Fabricators	8	12
Jokers	8	12
Mixers	6	14
Individual scratch highs: Oct. 5.		
Game Bowler	Team	Set
..... J. Grogan Busters	582	
225 J. Lottinville Pounders	576	
..... C. Skillman Hexes	571	
..... M. Brooks Spoilers	570	
245 P. Peterson Oops	569	
217 S. Faber No. 9	
Hi team set Oct. 5 — Spoilers	2970.	
Hi team game Oct. 5 — Hexes	1030.	
Hi individual set — Mel Brooks.		
Hi individual game — P. Petersen.		

DePauw Awards Degree To Deputy Director Sjoberg

MSC Deputy Director Sigurd Sjoberg has been awarded an honorary doctor of science degree by DePauw University at Greencastle, Indiana.

The Ceremony was conducted in conjunction with the opening of the school's new \$7.5 million Science and Mathematics Center.

Recovery Operations Chief Don Stullken and Astronaut Joe Allen, both DePauw alumni, took part in a science symposium that also was part of the center ceremonies.

Handball Court Backers Wanted

Handball fanciers are rallying to have one or more courts included in the now-being built EAA recreation center.

The call has gone out to anyone interested in handball to call Max Biggs at MSC extension 2391 or Tom Barry at 3566.